



# Migration of SAP-landscape from classical DC to the cloud

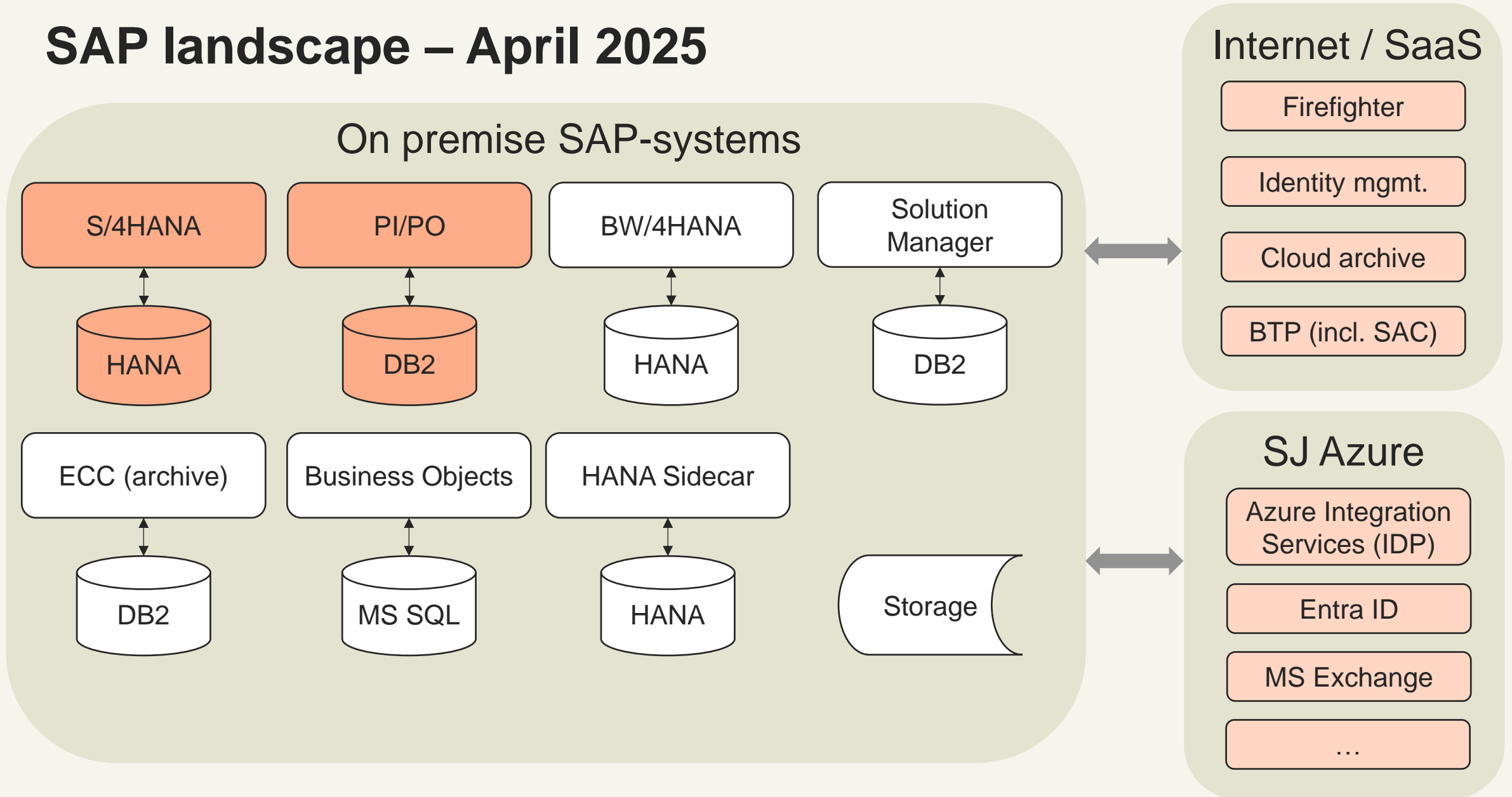
Ulrich Hunn, SJ IT



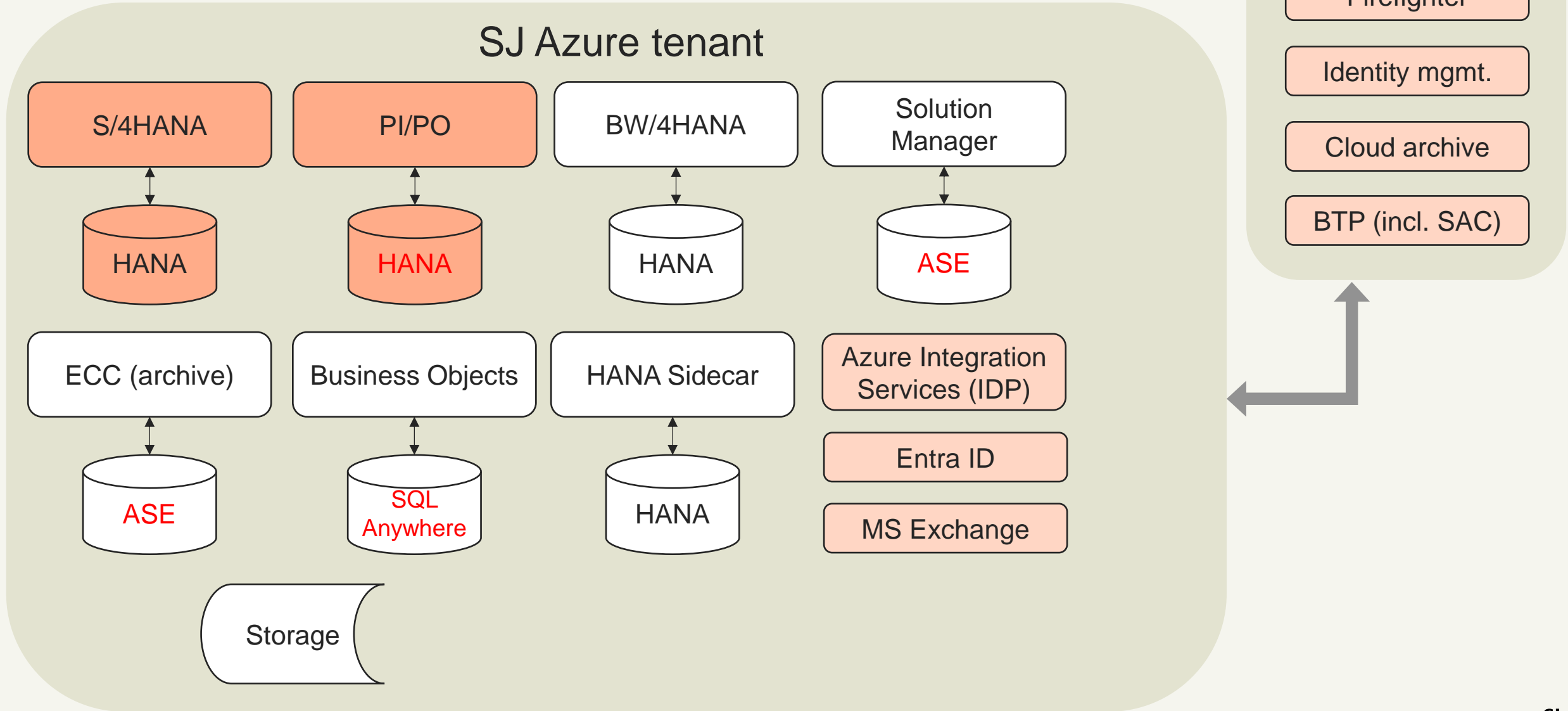
# Project scope and drivers

- Contract for data center and operations ended August 2025
- *Lift-n-Shift* of existing landscape (as-is)
- Improve security
  
- Adjust architecture to hyperscaler / cloud
- Sign third-party operational support
- Review of cost model (FinOps)

# SAP landscape – April 2025

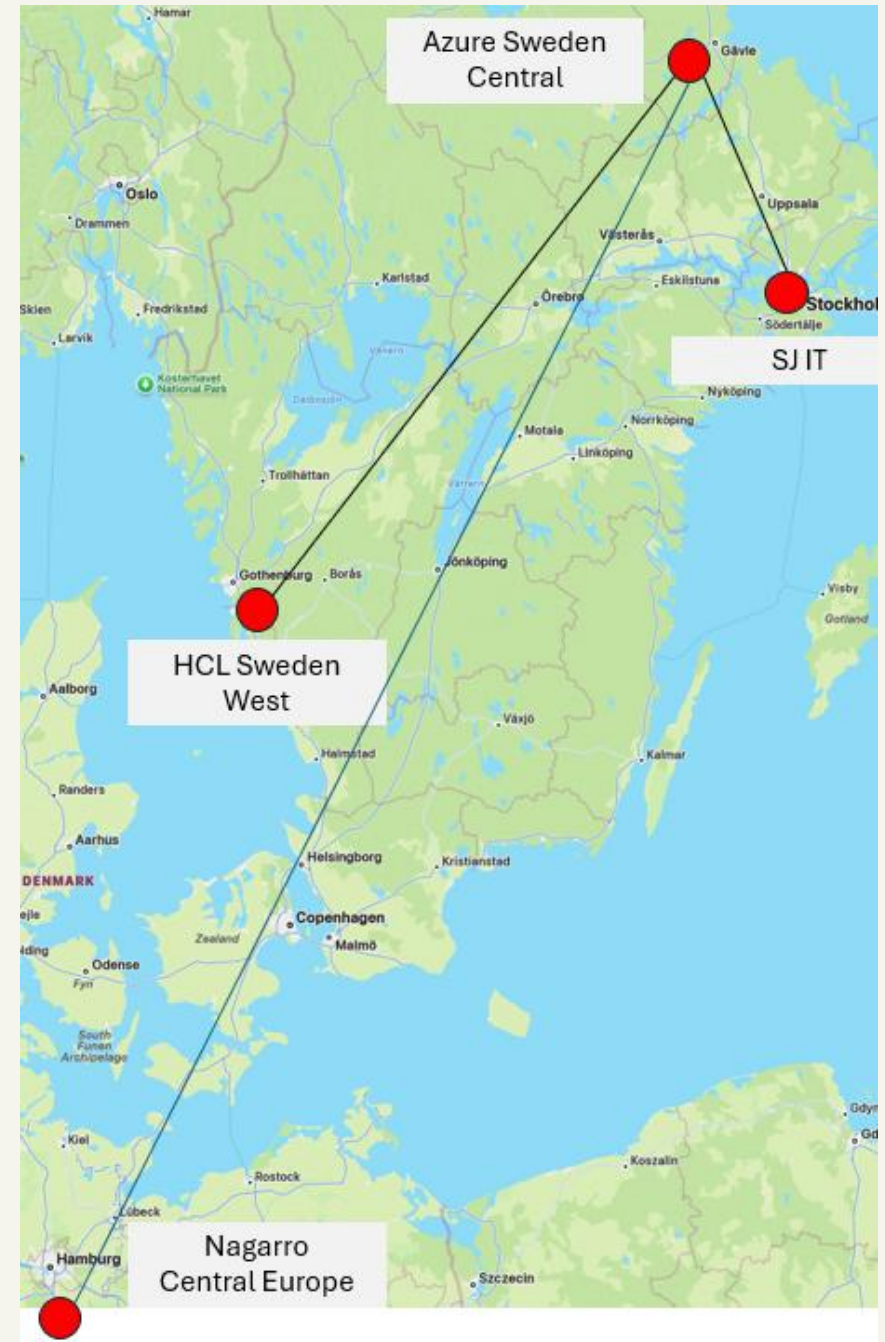


# Target landscape – Nov. 2025

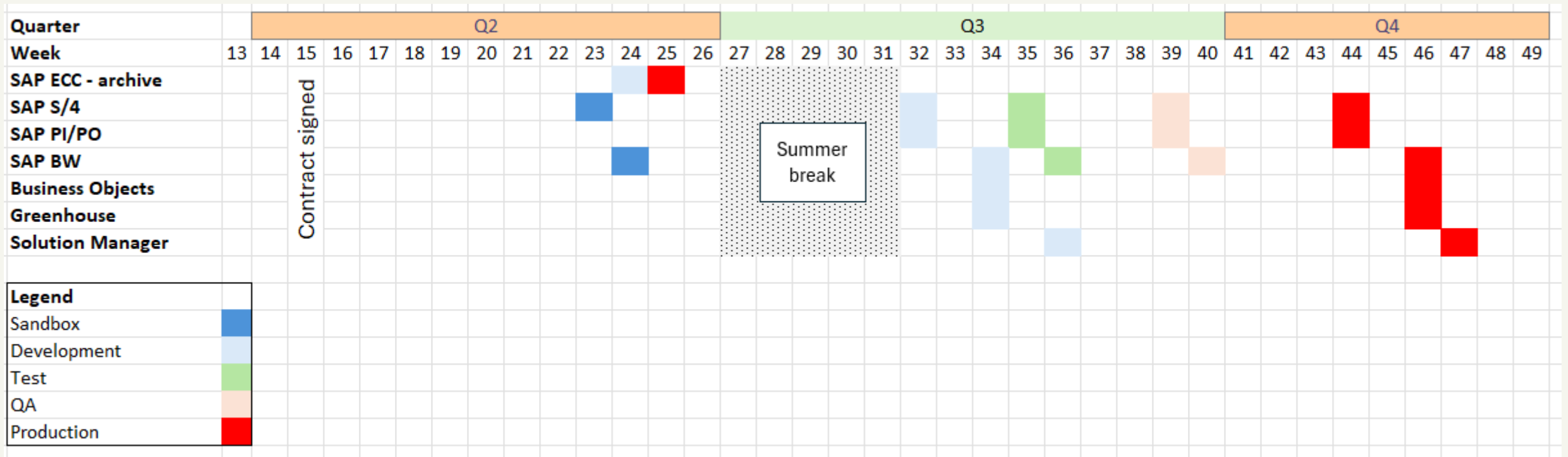


# Parties involved

- Source DC in Western Sweden - HCL
- Target DC: Azure Sweden Central - Microsoft
- Migration team:
- SJ IT (Stockholm)
- Nagarro (distributed over Europe)



# Migration timeline



- 1-2 years of preparation
- Roughly 7 months (calendar time) of implementation
- System landscapes with up to 5 systems

# Takeaways

- Hyperscaler skills are fundamental!
- Security requirements
- Firewalls + VPN definitions + Network Security Groups (NSG)
- HANA system replication vs. export-import
- Azure's preferred t-shirt-sizes
- Infrastructure as Code
- One partner for migration and daily operations
- Microsoft End Customer Investment Funds - program (ECIF)
- Pay-as-you-go vs. reservation of assets (CPU, RAM, storage)



FÖR SVERIGE FRAMÅT