



November 25, 2025

# **Orkla Foods Swedens Masterdata Journey Part 2**



**Sofie Styf**

---

IT Process Developer  
Orkla Foods Sweden



**Peter Ertl**

---

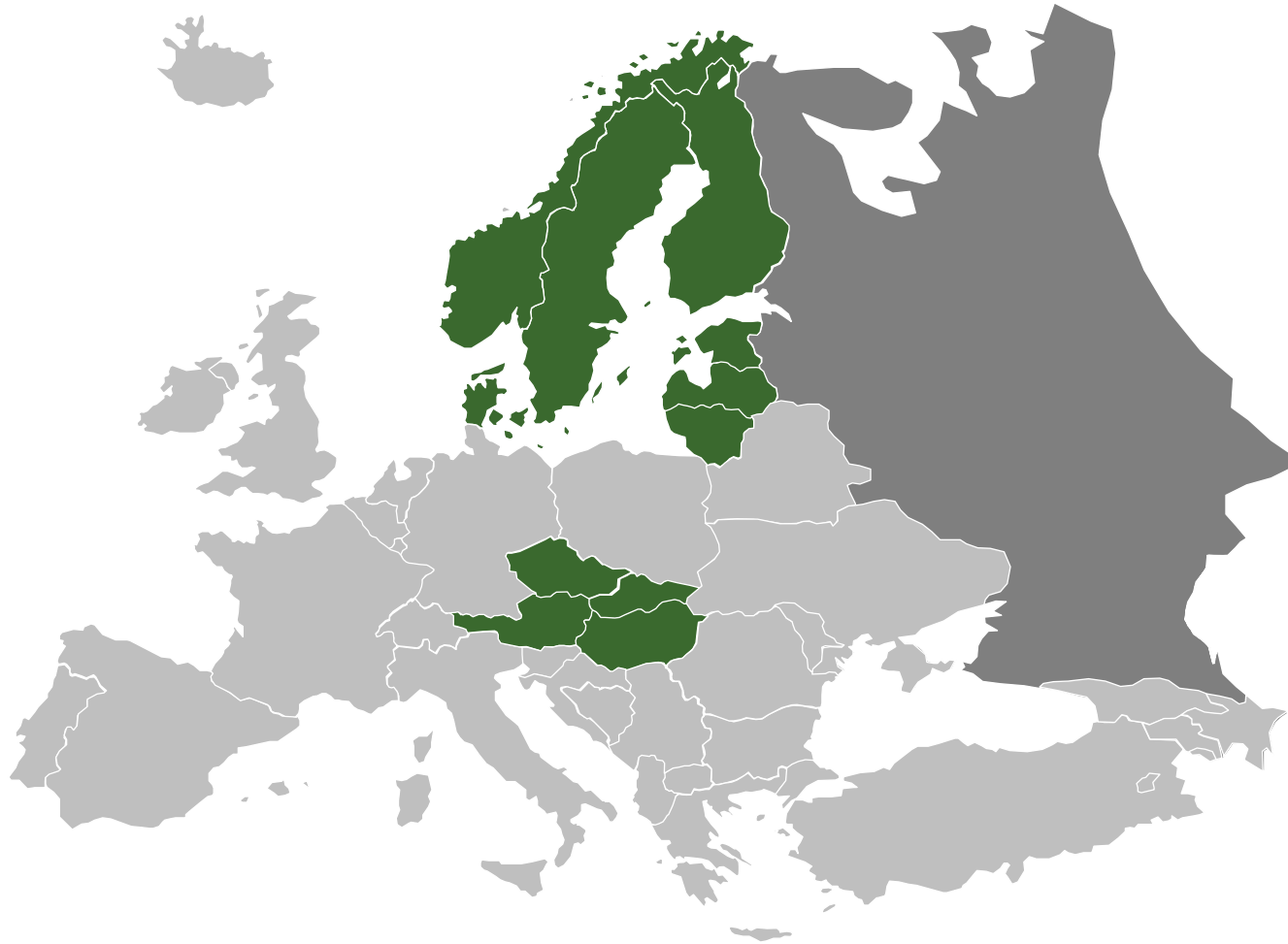
Sales Manager,  
Innovation & Technology LoB  
NTT Data

# Agenda

- Intro and recap current masterdata situation
- Proof Of Concept
- Project

# **Introduction to Orkla Foods Sweden and our masterdata situation**

# Orkla Foods



- *Norway*
- *Sweden*
- *Finland*
- *Denmark*
- *Estonia*
- *Latvia*
- *Lithuania*
- *Czech rep*
- *Slovakia*
- *Hungary*
- *Austria*



Operating revenue

MNOK 20



Employees

~6000



EBIT (adj)

MNOK 2,471

# Orkla Foods Sweden

One of Sweden's largest food producers

1400

Employees

90%

Of the food and drinks, we sell in Sweden, we prepare in Sweden

8

Modern food processing facilities for the preparation of food and drinks.

2030

Should all energy used in our production be fossil-free



# Sweden's most beloved brands



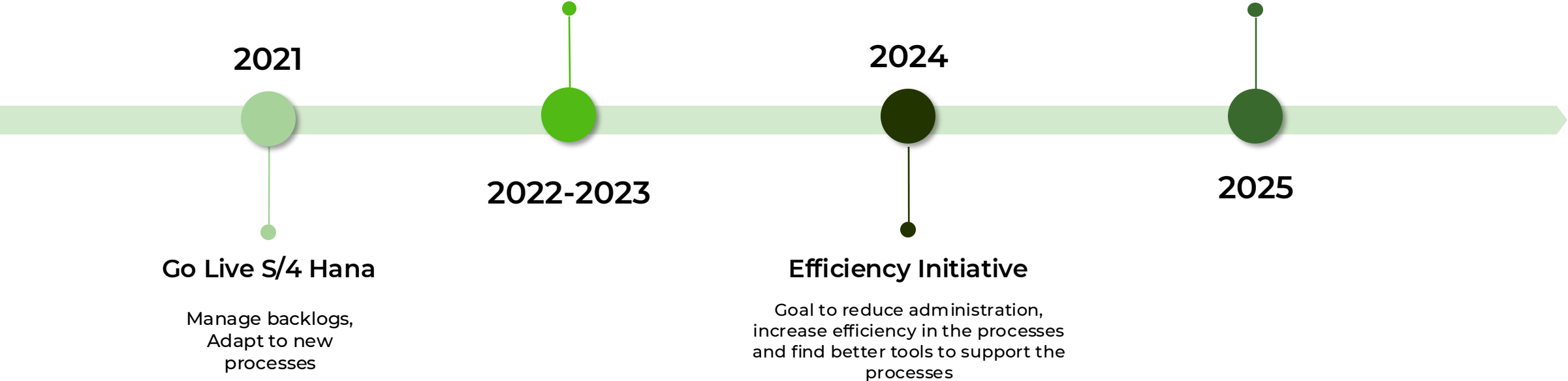
# The Masterdata journey in OFS

## Work in Masterdata Processes

We optimized the processes, made necessary adjustments for better functionality.

## Implement efficiency findings in new tool

After evaluation, we chose GLASSWING as the solution as our new Masterdata tool



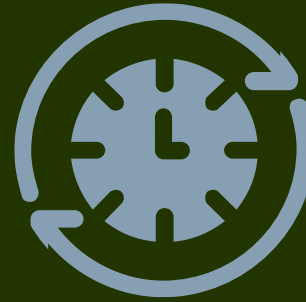
# Challenges in current Masterdata processes



No supportive workflows for our end to end processes that could also support parallel activities



A lot of administration in Excel and Teams to keep track of what is completed vs what is not in the processes



Data is entered 100% manually into the system, which is time-consuming and increases the risk of human errors



System roles that do not align with business process have led to resistance in master data work

# Proof Of Concept

# Why start with a Proof of Concept?



## The primary goal was to validate technical compatibility and co-existence with MDG

- Ensure GLASSWING runs smoothly in the SAP S/4HANA environment.
- Confirm GLASSWING can coexist with MDG without impacting core systems or data ownership.
- Enable parallel operation since Orkla Foods' implementation will span over three years.



## Additional benefits of the PoC

- Better understanding of GLASSWING and what the next steps would require.
- Risk reduction before committing to a major change.
- Stakeholder alignment, ensuring that the transition supports our shared SAP landscape and business goals.



## Why we chose a short, focused technical PoC

- We wanted to start fast but of course make sure that critical use cases worked.
- Strong confidence in GLASSWING after NTT demos and Nortura's reference case.

# Result

The PoC confirmed that GLASSWING can run in our environment and handle critical scenarios.

Through good collaboration between Orkla Foods Sverige, Orkla IT and NTT, we successfully created and executed ~ 60 test scripts all with approved results.

The test scripts covered a broad range of product variations and scenario types to ensure all possible scenarios in our coming system landscape.

## Product variations

- Products produced by Orkla Foods Sweden and sold by Orkla Foods Sweden.
- Products produced by Orkla Foods Sweden and sold by other Orkla Company.
- Products produced by Other Orkla Company and sold by other Orkla Company.
- Products produced by Other Orkla Company and sold by other Orkla Company.

## Scenarios the products got tested through:

- Creation scenarios
- Extend scenarios
- Various change scenarios
- Stress tests
- Positive and negative testing

# Project

- Data analysis
- New way of working
- Progress so far
- The journey to masterdata excellence

### Material - Create

#### Simplification

Field Count

**137**  
Fields Currently Used

**99**  
Fields In Use - Future

**38**  
Fields Not Relevant

#### Automation

**66** Automated Fields    **33** Manual Fields    **66.67 %** Automation Rate

● Manual Fields ● Automated Fields

### Missing Values

Threshold: Missing field value

0.95

**5,369** Fields Missing Values

● Empty Mandatory Fields ● DepValues ● Best Practice violation

#### Filter Subtype

- Markera alla
- Z401(Orkla Com...
- Z402(Orkla Pack...
- Z405(Orkla Con...
- Z412(Orkla Spar...

#### Filter LocationType

- Markera alla
- GLOBAL\_Global
- PV\_PlantVal
- SLOC\_Storage L...

#### Filter LocationID

- Markera alla
- GLOBAL
- M\_L\_7000\_EWM...
- M\_L\_7020\_EWM...
- M\_L\_7040\_Reser...
- M\_L\_7060\_Trail ...
- M\_L\_7060\_Trial ...
- M\_L\_7061\_Trail ...
- M\_L\_7062\_Trail ...
- M\_L\_7070\_EWM...
- M\_L\_7090\_Stora...

### Material - Extend

#### Simplification

Field Count

**95**  
Fields Currently Used

**59**  
Fields In Use - Future

**36**  
Fields Not Relevant

#### Automation

**49** Automated Fields    **10** Manual Fields    **83.05 %** Automation Rate

● Manual Fields ● Automated Fields

### Cleansing

Threshold: Data Cleansing

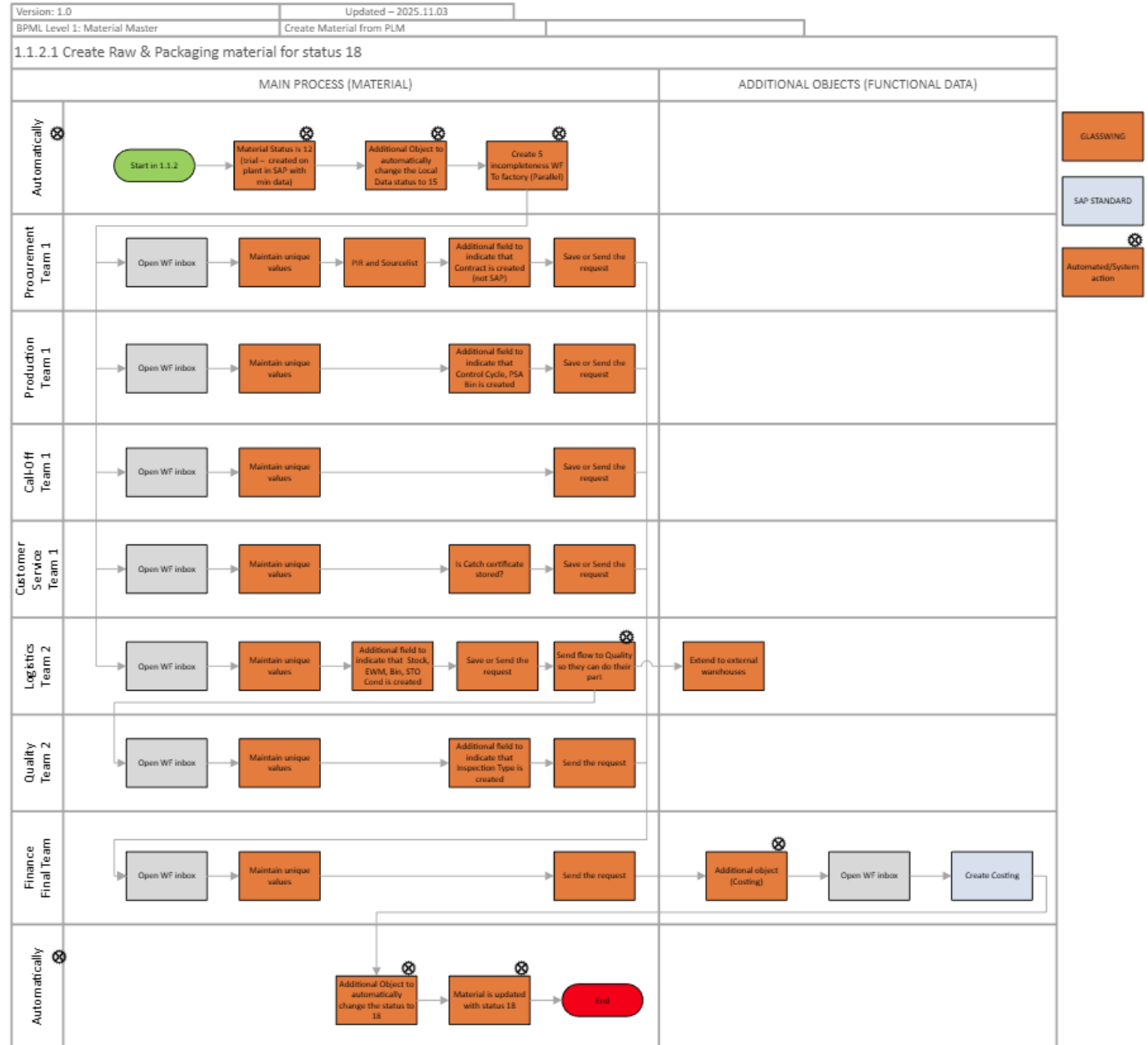
0.05

**18,681** Fields to be Cleansed

● Remove Values ● Update Values

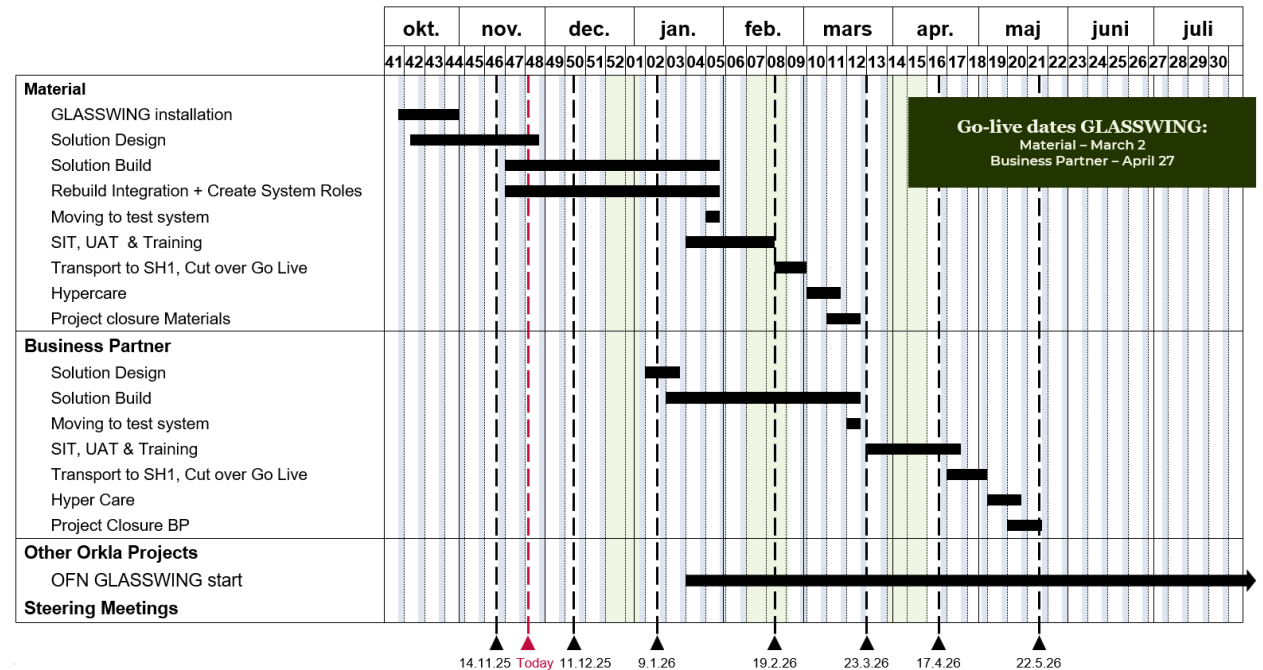
# New way of working in our processes

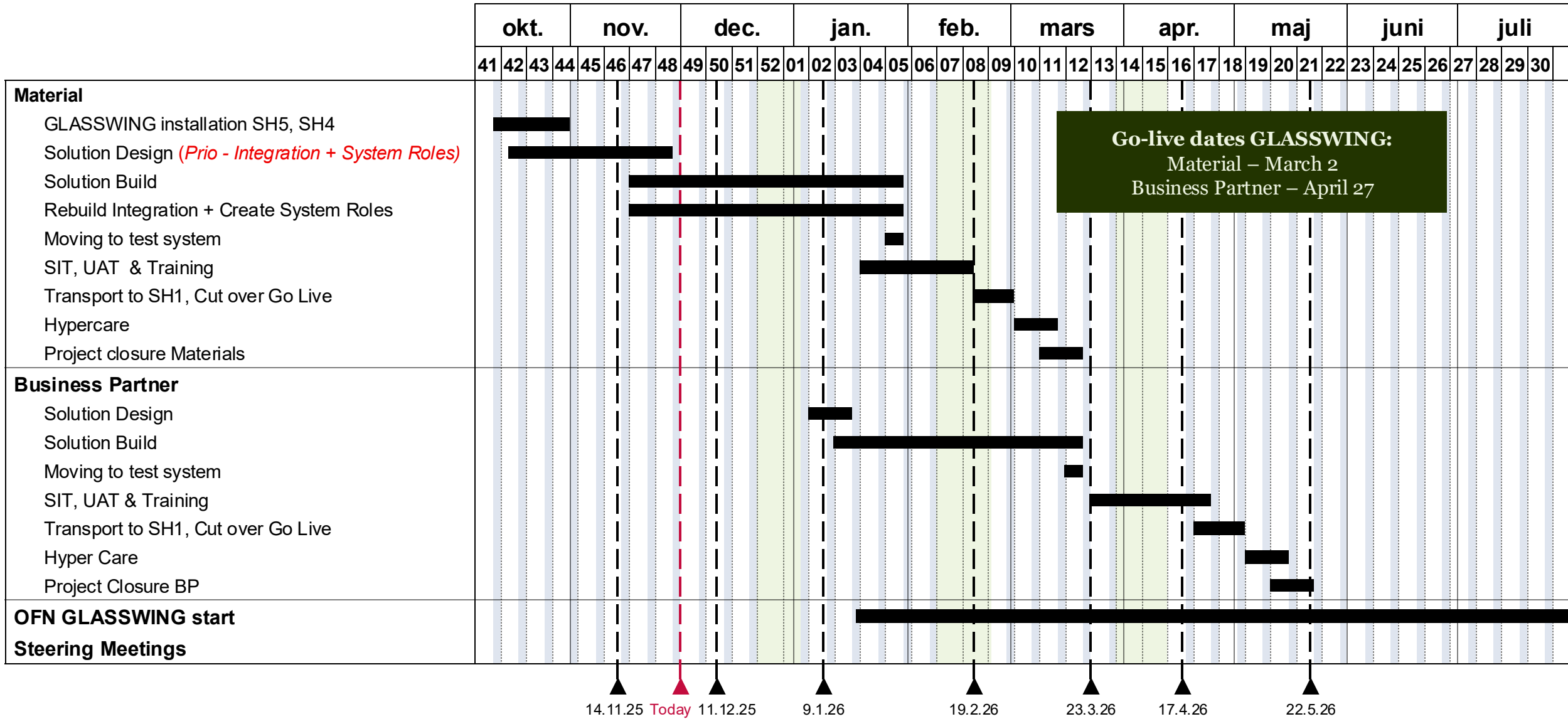
- ✓ Workflows instead of manual coordination
- ✓ Fewer data fields to manage thanks to automation
- ✓ Fewer touchpoints for functions in the process through combined steps
- ✓ No more Excel files



# Timeline and progress so far

- Project started in Oktober
- First focus → Solution Design
  - Mapp all masterdata processes with GLASSWING introduced.
  - Redesign integrations and create new systemroles.
  - Data analysis on the masterdata objects to cleanse data and create foundation in GLASSWING.
- Planned Go-Live:
  - Material March 2
  - Business Partner April 27





# What we look forward to after GLASSWING implementation

## Success Criteria:

- ✓ Master Data Processes: In place for all objects in scope.
- ✓ System Integration: GLASSWING integrated with PLM, MDG, and other subsystems, replacing old flows where needed.
- ✓ Standardized Workflows: Consistent for Material Master, Business Partner, and related data objects.
- ✓ Automation & Efficiency: At least 60% less manual data entry for Material Master.
- ✓ Smooth Transition: Coexistence and migration from MDG NetWeaver to GLASSWING with minimal disruption.
- ✓ Post Governance Model: Clear roles and responsibilities between Orkla Foods, Orkla IT, and NTT for ongoing development & support.

# The continued journey towards Master Data Excellence

## Implement efficiency findings in new tool

After evaluation, we chose GLASSWING as the solution as our new Masterdata tool

2025

## Driving Business Through Data

With GLASSWING implemented, we have now freed up time to focus on using our data in the best way, working with analytics, making better decisions, and improving our processes through high-quality data.

2027-Beyond

2026 - 2027

## The new MDM journey begins with GLASSWING

Work in the new GLASSWING processes, develop the rule engine in GLASSWING to automate even more data and ensure a smooth transition for the other Orkla Foods companies

# Thanks for us!



**Sofie Styf**

sofie.styf@orklafoods.se

+46 76 100 89 16



**Peter Ertl**

peter.ertl@nttdata.com

+45 26 86 88 71



SAP-certified add-on for **the maintenance and governance of Master Data**, by utilizing a rule-based configuration the business processes are automated and guided, overall leading to higher data quality and business compliance

## 3 Winning Principles



### Governance

Definition of clear responsibilities and process control for the creation and change processes



### Automation

Business Rules definition is the key to automation and speed



### Simplification

The content definition and structure of the master data leads to simplified maintenance

- Material
- Business Partner (Customer, Vendor, Credit Mgt., Carrier, Counter Party, Prospect, Treasury)
- Purchasing Info Records
- WBS-Elements
- G/L Accounts
- Cost Centers
- Profit Centers
- Internal Orders
- Functional Location and Equipment
- Maintenance Items
- Service Master

**90%** automated maintenance of Master Data in SAP

- Additional Objects (e.g. BOM, routings, master recipe, inspections, etc.)