



# SAP Business Technology Platform

How can SAP Business Technology Platform transform your data and analytics into a service?

Kenneth Dalvik , SAP Svenska

PUBLIC



THE BEST RUN 

# Disclaimer

The information in this presentation is confidential and proprietary to SAP and may not be disclosed without the permission of SAP. Except for your obligation to protect confidential information, this presentation is not subject to your license agreement or any other service or subscription agreement with SAP. SAP has no obligation to pursue any course of business outlined in this presentation or any related document, or to develop or release any functionality mentioned therein.

This presentation, or any related document and SAP's strategy and possible future developments, products and or platforms directions and functionality are all subject to change and may be changed by SAP at any time for any reason without notice. The information in this presentation is not a commitment, promise or legal obligation to deliver any material, code or functionality. This presentation is provided without a warranty of any kind, either express or implied, including but not limited to, the implied warranties of merchantability, fitness for a particular purpose, or non-infringement. This presentation is for informational purposes and may not be incorporated into a contract. SAP assumes no responsibility for errors or omissions in this presentation, except if such damages were caused by SAP's intentional or gross negligence.

All forward-looking statements are subject to various risks and uncertainties that could cause actual results to differ materially from expectations. Readers are cautioned not to place undue reliance on these forward-looking statements, which speak only as of their dates, and they should not be relied upon in making purchasing decisions.

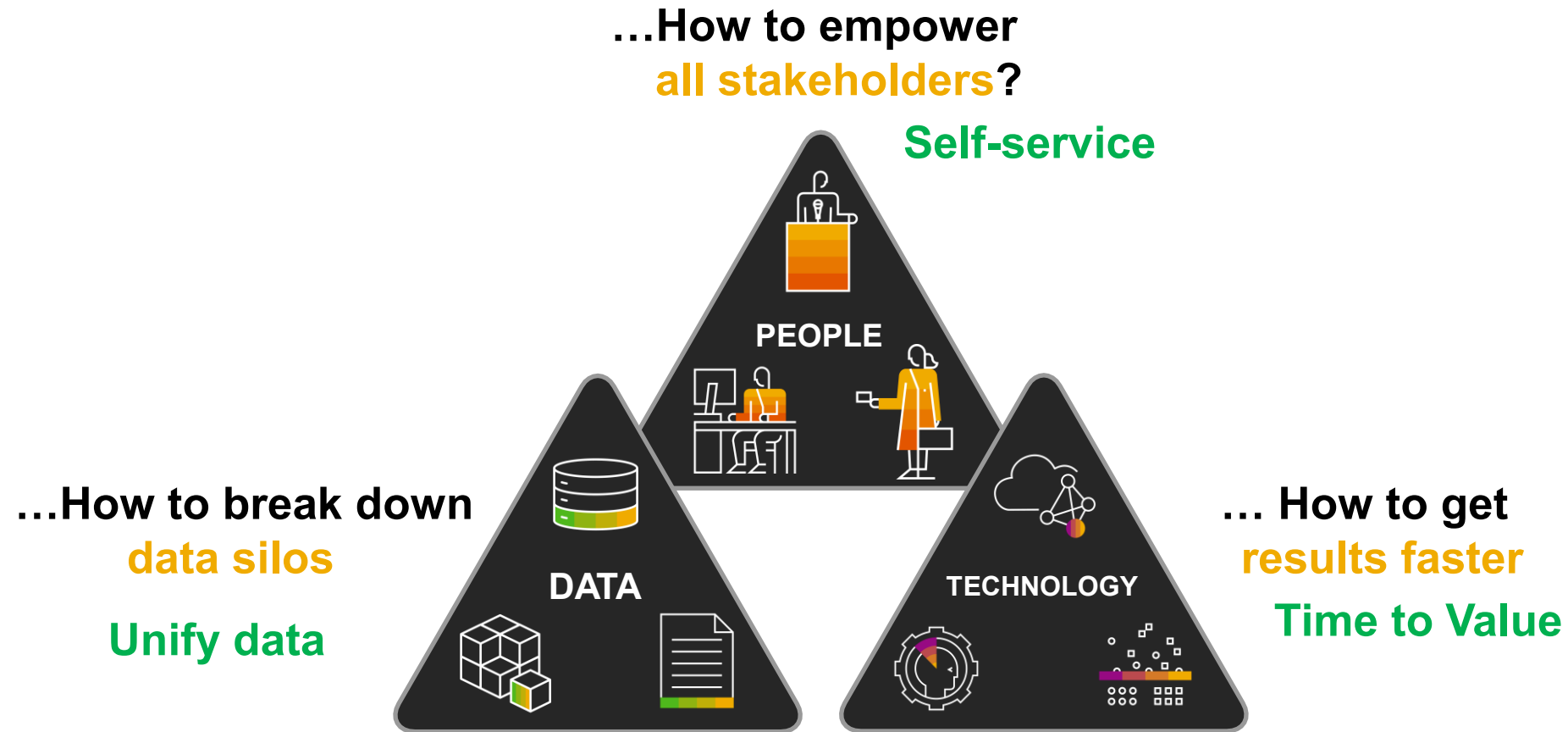


## Agenda

- What is Business Technology Platform?
- How can Business Technology Platform transform your Data & analytics into a service?
- How easy is it to buy and maintain service and capabilities?
- Summary & Q&A



# The Challenge – Data & Analytics



...How to turn your data into a service and let your business become data driven

# Challenges Today for **Self-service data organizations**

1

Most data warehouse solutions are IT driven

2

Difficulty accessing, understanding, connecting & combining different data sets

3

Lack of easy to understand modeling capabilities

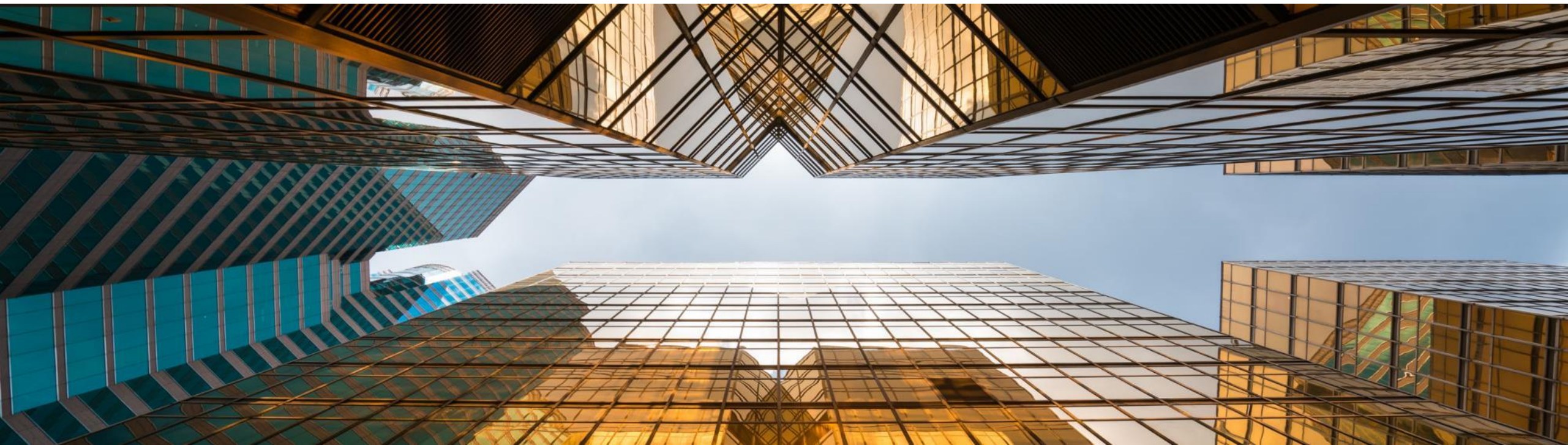
4

No single point for quality assured data

5

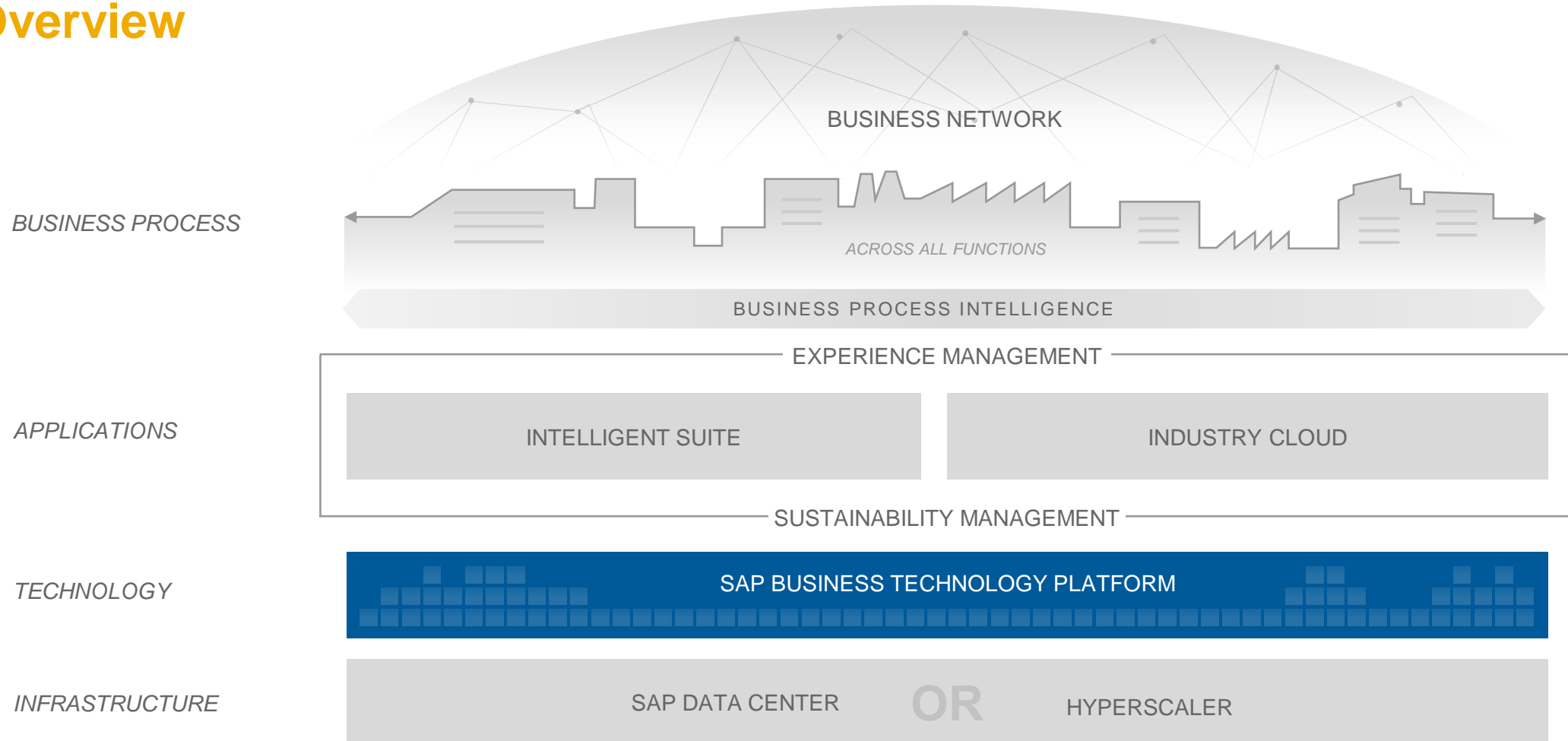
Hard to collaborate and share data and models

# What is SAP Business Technology platform?



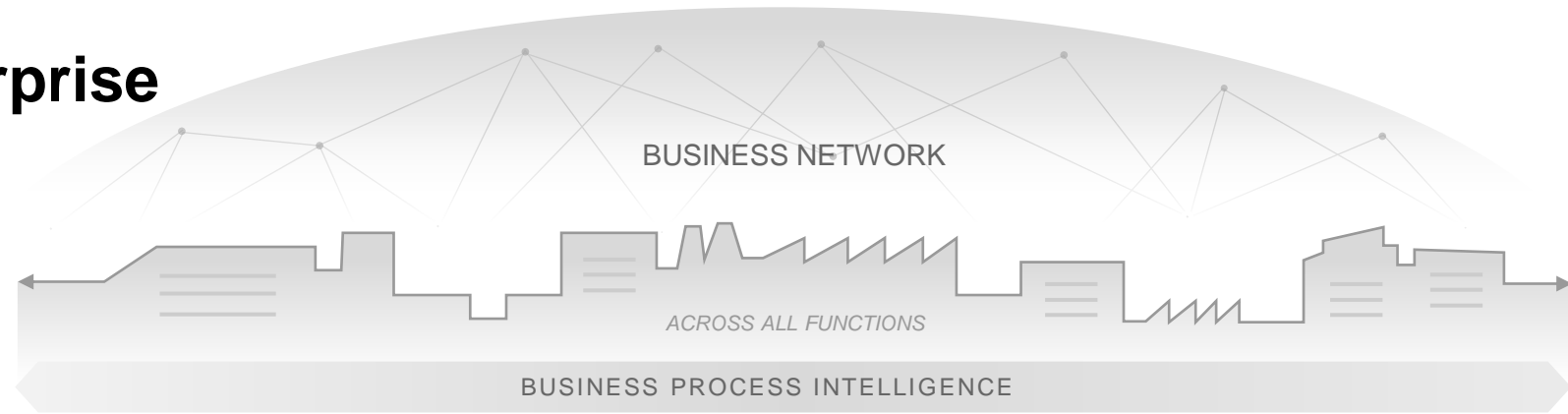
# Intelligent Enterprise

## Overview



# Intelligent Enterprise Overview

BUSINESS PROCESS



APPLICATIONS



MARKET CATEGORIES /  
PRODUCT EXAMPLES

SAP BUSINESS TECHNOLOGY PLATFORM

CUSTOMER  
REQUIREMENTS

▼  
DATABASE &  
DATA MANAGEMENT

▼  
ANALYTICS

▼  
APPLICATION  
DEVELOPMENT  
& INTEGRATION

▼  
INTELLIGENT  
TECHNOLOGIES

INFRASTRUCTURE

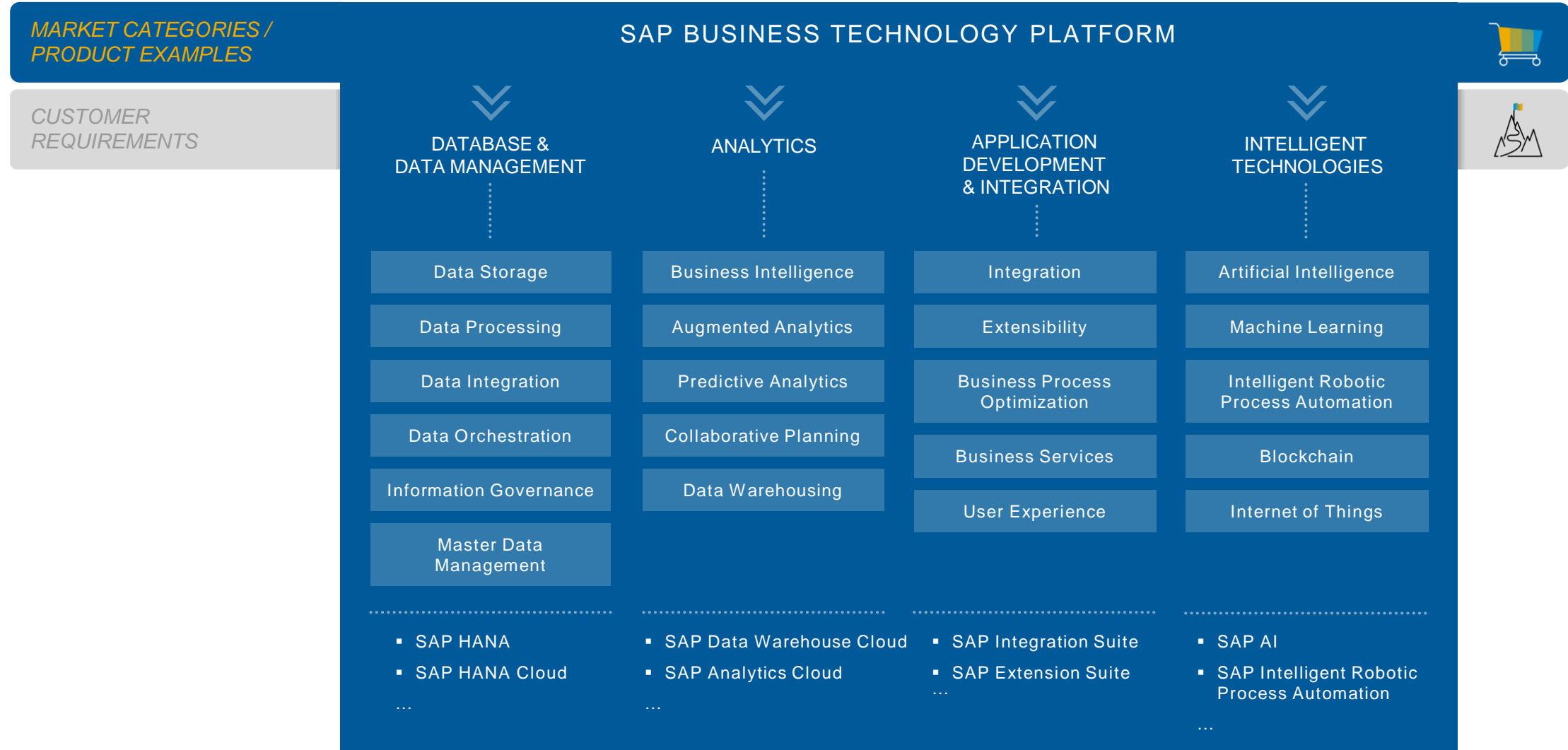
SAP DATA CENTER

OR

HYPERSCALER



# Existing SAP Business Technology Platform Capabilities



# SAP Business Technology Platform – A Target State

subject to change

MARKET CATEGORIES /  
PRODUCT EXAMPLES

CUSTOMER  
REQUIREMENTS

EXTENSIBILITY  
& ECOSYSTEM



DATA-TO-VALUE



INTEGRATION



## SAP BUSINESS TECHNOLOGY PLATFORM



### Application Plane

Access to all applications  
incl. lifecycle and  
extensibility - structured by  
application domain

Application Cockpit

UX/Mobile/Conversational

Apps and Business Services

Business Configuration

Workflow/RPA

Low-Code/No-Code

App Marketplace for  
Ecosystem

### Data Plane

Semantic and consistent  
access to all enterprise  
data

Machine Learning / AI

Analytics & Planning

Data Management

*incl. various data sources like IoT*

Data Warehouse

Data Governance & Control

Data Models

### Foundational Plane

Foundational services to  
build secure, scalable  
applications and enable  
communications between  
applications

Domain Model

APIs and Events

Integration

Developer Tooling

Security and Compliance

*incl. Service Mesh*

Foundational Services

*e.g. Identity and Authentication, (Audit) Logging, Lifecycle Management*

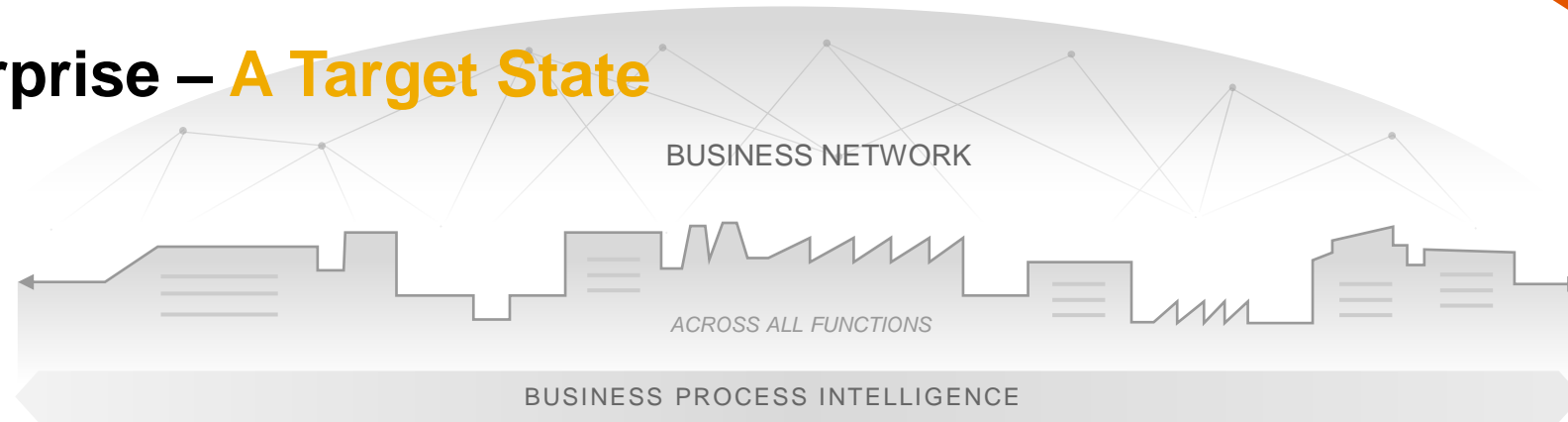
Multi Cloud Infrastructure + Kubernetes/Serverless based Foundation

*incl. Hybrid deployment options (public cloud, private cloud)*

# Intelligent Enterprise – A Target State

subject to change

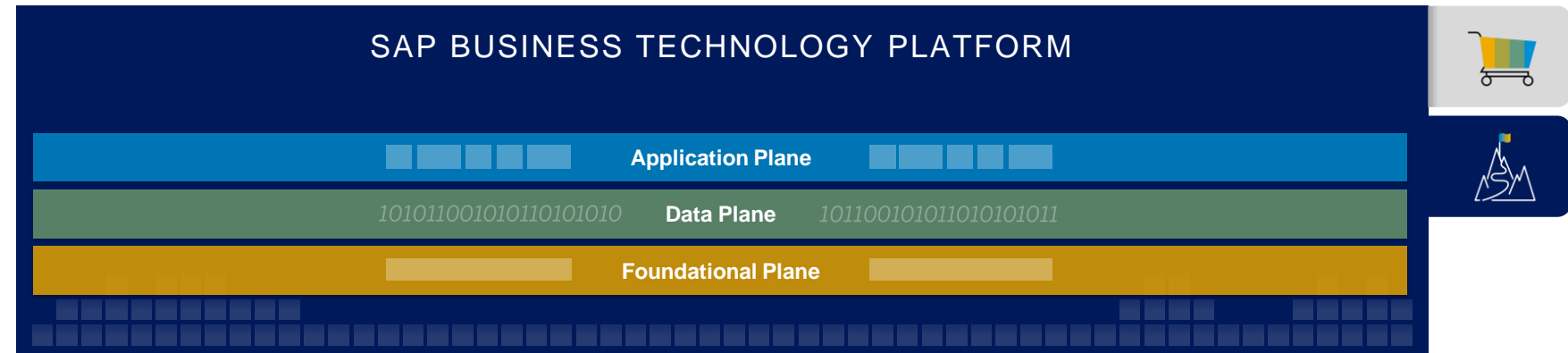
BUSINESS PROCESS



APPLICATIONS



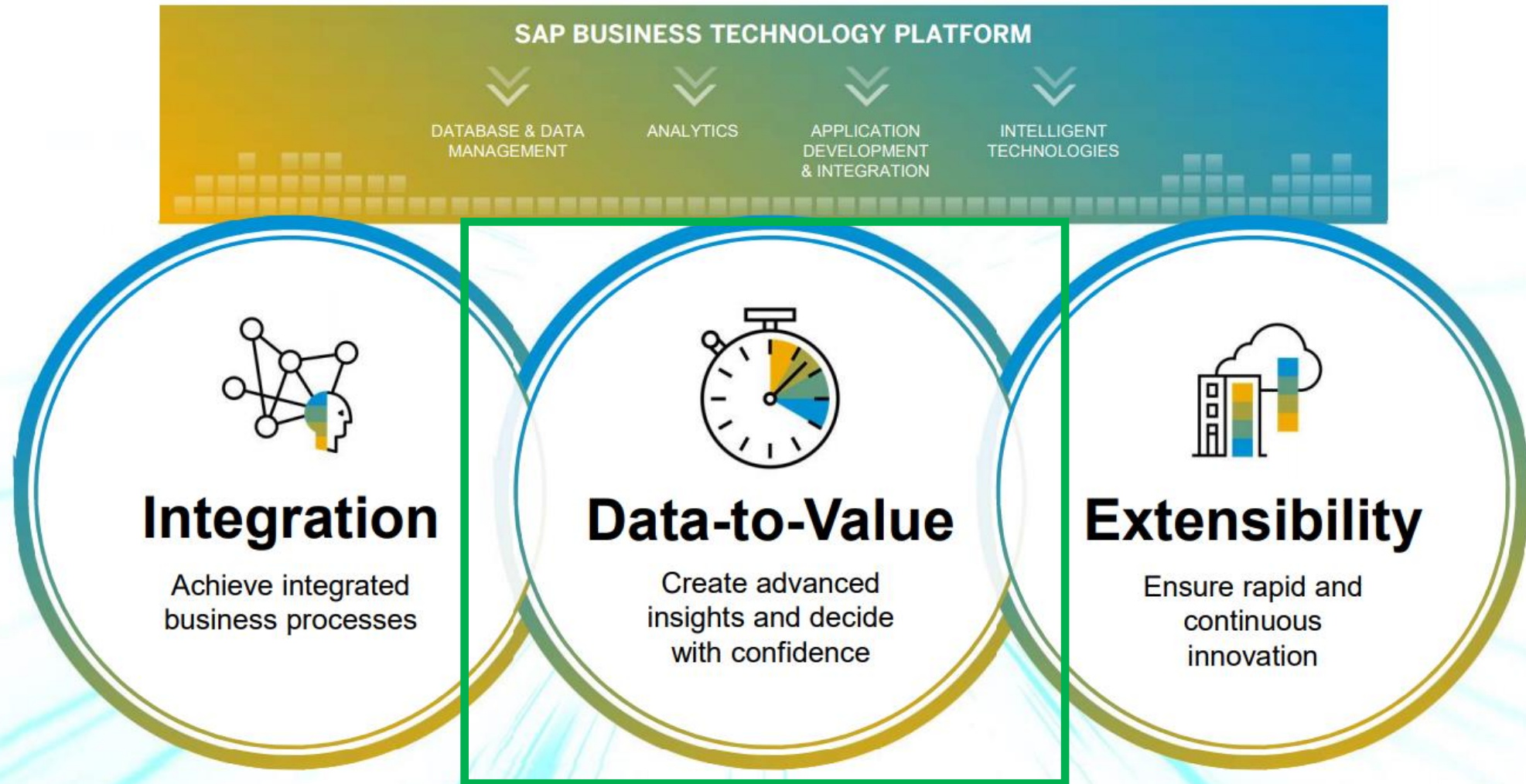
TECHNOLOGY



INFRASTRUCTURE



# Business Technology value proposition



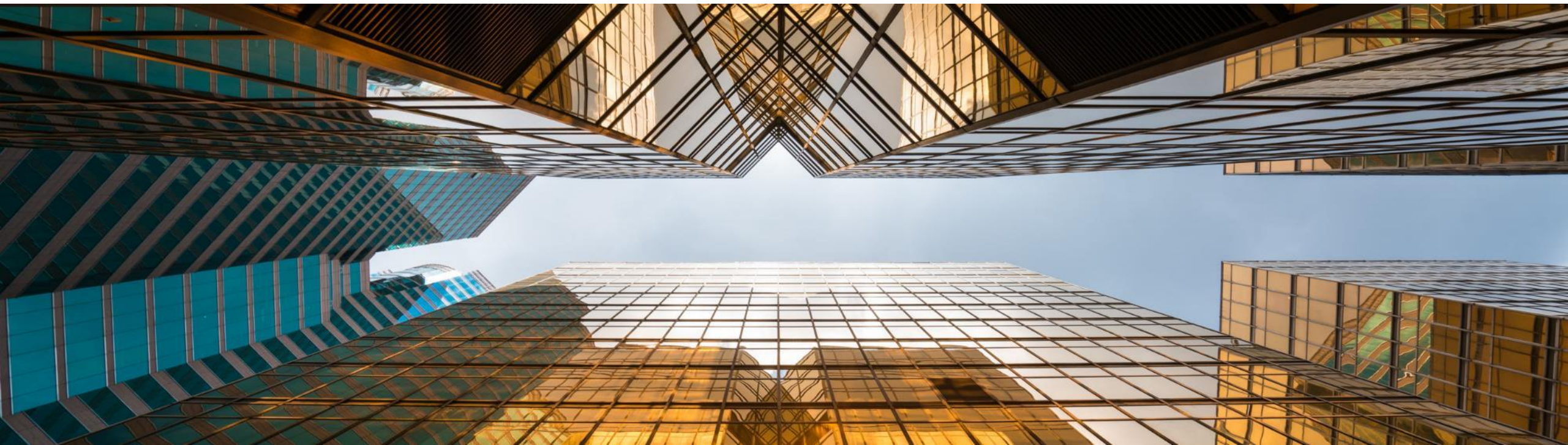


# THE DATA VALUE FORMULA



$$\begin{array}{ccccccc} \text{VOLUME} & & \text{QUALITY} & & \text{USAGE} & = & \text{VALUE} \\ \text{Data of any size} & & \text{Data of any kind} & & \text{Data for anyone} & & \text{Data Driven Enterprise} \\ \text{In-Memory | Disc | Lake} & & \text{Datasets | Streams | Models} & & \text{BI | Planning | Predictive} & & \\ \text{SAP HANA} & & \text{SAP Data Warehousing} & & \text{SAP Analytics} & & \end{array}$$

# Data & analytics as a **service** in **SAP BTP**



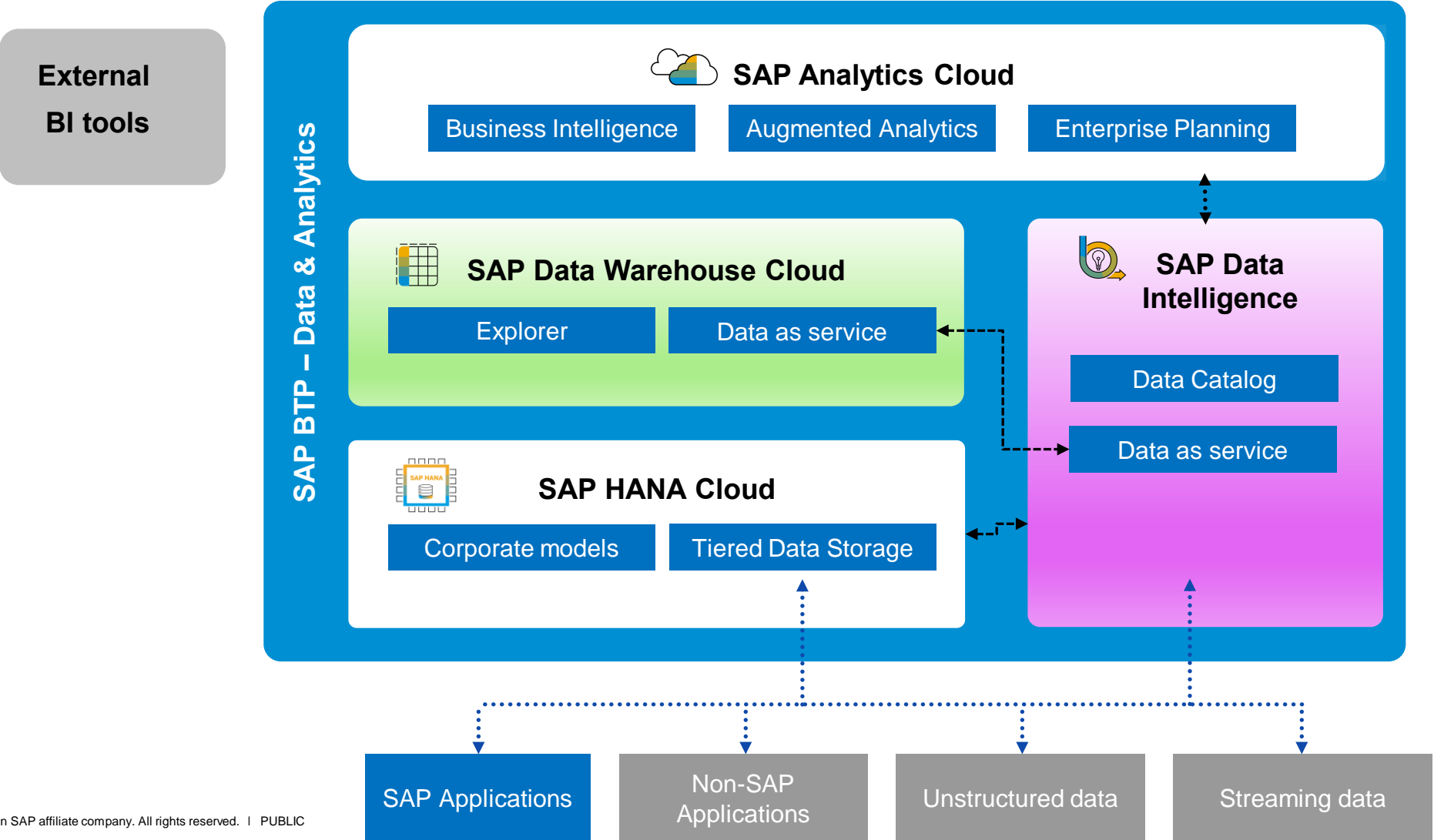
# How to transform your data & analytics into a service?

What do we mean by Data as a service?

## Data as a service

- Trusted and quality-assured data
- Easy to find and evaluate
- Understandable data – Business context (Sales statistics, Customers, Products..)
- Clear ownership and SLA of service
- Open for consumption (tool agnostic)
- Possible to track up and down stream usage

# SAP Data & Analytics





# SAP Data & Analytics - How to transform your data & analytics into a service?

BTP offers two non-competing approaches to support Data as a service depending on User groups;

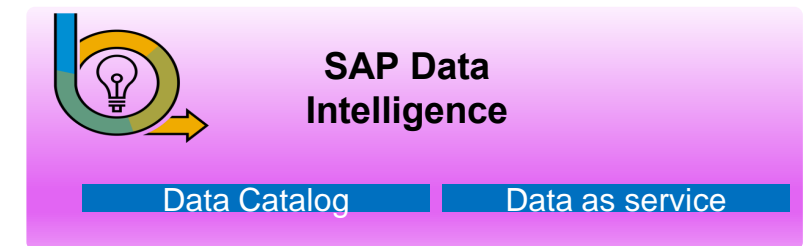
## Business analysts



### Capabilities needed

- Explorer datasets
- Self-service modeling
- Query data on the fly using SQL
- Connect any BI tool to data set

## Advanced users/ Data scientists



### Capabilities needed

- Discovery and search data
- Profile data
- Investigate lineage
- Prepare data
- Create and maintain business rules

# SAP Data Intelligence – Enabling a Unified Data Catalog

## Discover

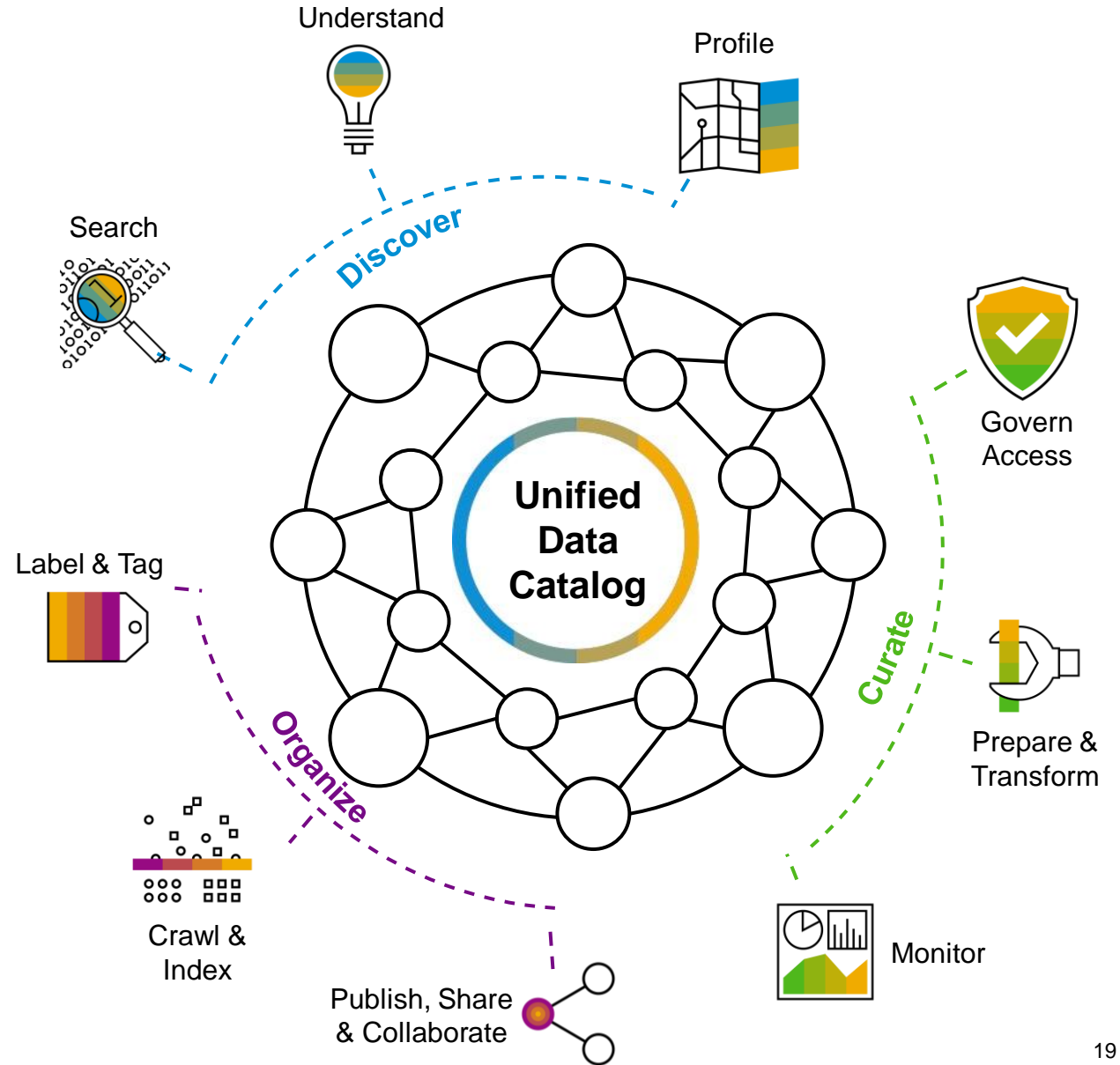
**Discover data** (*crawl, profile, organize, link, and enrich*) and make data **accessible** (*browse, search*)

## Organize

**Classify and organize data** (ML-driven *auto-tag*) and **understand** it (*location, attributes, quality, lineage, sensitivity*)

## Curate

Enforce **centralized authorization and security** for data orchestration, and control **data quality standards**



# Demo - details

**Business analysts**



**SAP Data Warehouse Cloud**

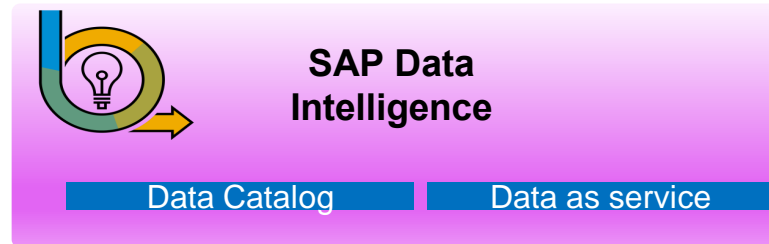
Explorer

Data as service

- Explorer tagged as "Production\_order" and "Business\_partner" or "Data\_service"
- Self-service modeling
- Query data on the fly using favorite SQL tool
- Connect to BI tool to view data set

# Demo - details

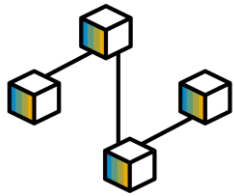
Advanced users/ Data  
scientists



- Go to Data catalog – metadata explorer
- Go to Profiled data
- Explore dataset Open\_sap\_business\_partner
- Columns
- Preview data



# Why SAP Data Warehouse Cloud as Data as Service for Business analysts?



**Unmatched connectivity to SAP and Hyper-scalers**



**Prebuilt datamodels towards SAP applications**



**Analyse & Combine data from different sources**



**Easy to Explore , Share and work with data**



**Flexible and cloud based pricing**



**Open for any consumption**

# Why SAP Data Intelligence as Data as a service for Advanced Analysts?



## Easy to use Data catalogue and discovery tool and beyond

Discover, prepare, profile, classify and catalog your data in a intuitive UX

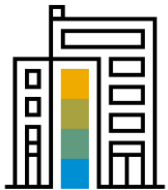
---



## Multi use case platform covering all your Data capabilities

Use SAP DI to more than Data catalogue and integration. Explore the whole platform

---



## Unmatched SAP integration and reusability

Natively reuse and connect all SAP sources (HANA, BW, Data Services, SLT, S/4HANA, SAP cloud Apps etc.)

# Business benefits of the using SAP BTP to achieve Data as a service



## Flexible & Agile

SaaS and cloud based licenses models give flexibility and agility.  
A new capability is up & running in seconds rather than weeks or months



## Time to value

Utilize ready-made data models and data pipelines that leverage standard integration to accelerate your implementation  
This approach will give shorter implementation and faster results



## New Paradigm

The concept supports paradigms such as Data Mesh and similar.



## Data is value

SAP BTP offers functionality to complete the Data Value formula and get real value from your data



## Innovation

Continuous innovation without disruption.  
Data to Value is a key strategy for SAP and BTP enabling the Intelligent Enterprise

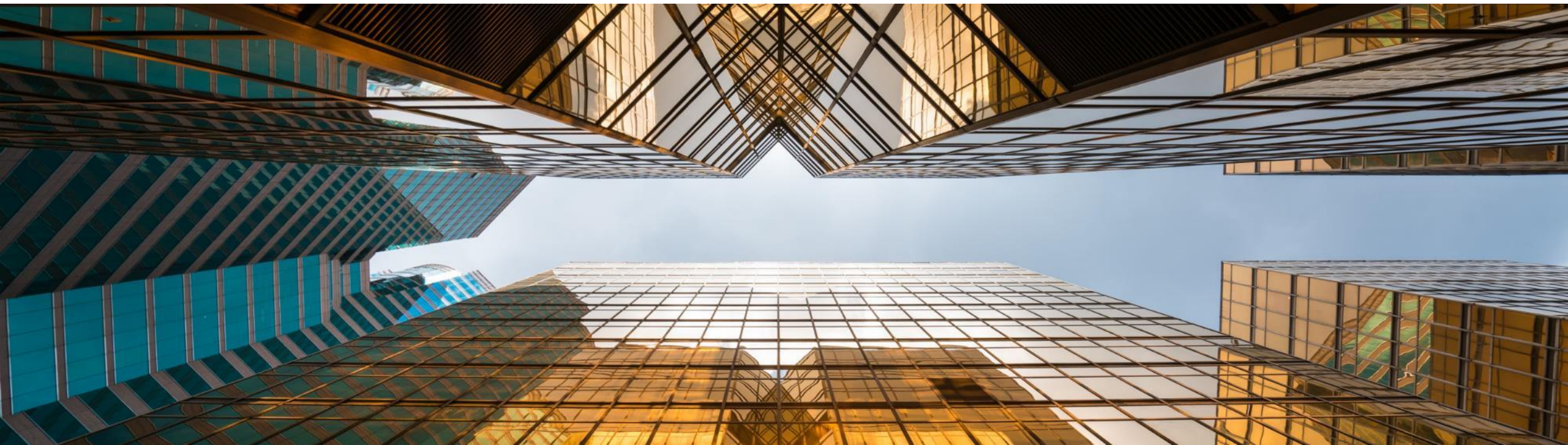


## Data democratization

The new concept empower users to access and work with data in a new way. It makes data more democratic

# **SAP BTP Cockpit**

**Easiness of buying, activating and maintaining services**





# BTP Cockpit – demo – Navigate and check status of services

How to navigate [services](#) and check status:

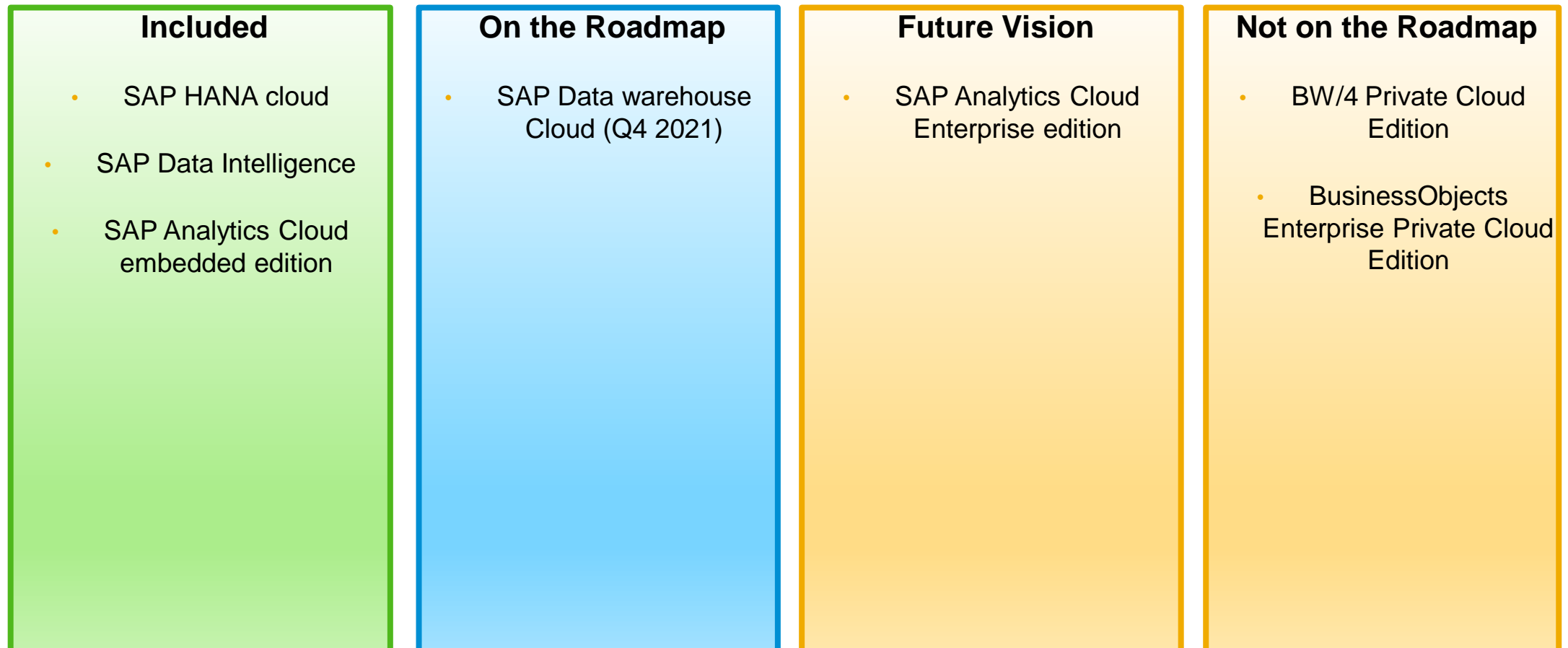
- SAP HANA cloud
- SAP Data Intelligence

The screenshot displays the SAP BTP Cockpit interface. The top navigation bar includes the SAP logo and the text 'SAP BTP Cockpit'. On the right, there is a user profile icon and the name 'Kenneth'. Below the navigation bar, the left sidebar contains a list of navigation items: Applications, Services (selected), Service Marketplace, Instances, SAP HANA Cloud, SAP HANA Cloud Migrations, Routes, Security Groups, Events, Members, Useful Links, and Legal Information. The main content area shows the 'Space: dev - Service Marketplace' with a count of 'All: 55'. It includes a search bar and two dropdown menus for 'All Capabilities' and 'All Statuses'. The main content area is titled 'Extension Suite - Development Efficiency' and displays four service cards: 'Application Autoscaler' (with a description: 'Automatically increase or decrease the number of application instances.'), 'Application Logging Service' (with a description: 'Create, store, access, and analyze application logs.'), and two partially visible cards at the bottom.

# Platform & Services vs Portfolio

Business Technology Platform is both a portfolio as well as a SaaS platform.

Every product in portfolio is not available as service on the BTP

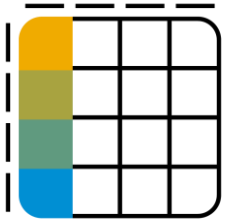


## Further sessions

### SAP Data Warehouse Cloud & SAP Data Intelligence

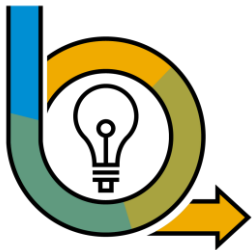


Data to Value workshop series – in depth workshop series on how SAP solution can enable value creation of your data and support concepts such as Data Mesh



Product presentation and/or Technical Academy workshops for SAP Data Warehouse Cloud

All is free of charge



Product presentation and/or Technical Academy workshops for SAP Data Intelligence

# Summary

SAP Business Technology Platform is a key enabler for transforming the way your organization work with data & analytics.

For SAP customers the Business Technology Platform gives **un-matched capabilities** for turning your data into a service – **into gold**



# Thank you.

Contact information:

**Kenneth Dalvik**

Presales Enterprise Architect

Sveavägen 44, Stockholm

+46707895131

kenneth.dalvik@sap.com



THE BEST RUN 