



New tools from SAP to support your successful journey to SAP S/4HANA

Sabine Rau, SAP
October 06, 2020

PUBLIC



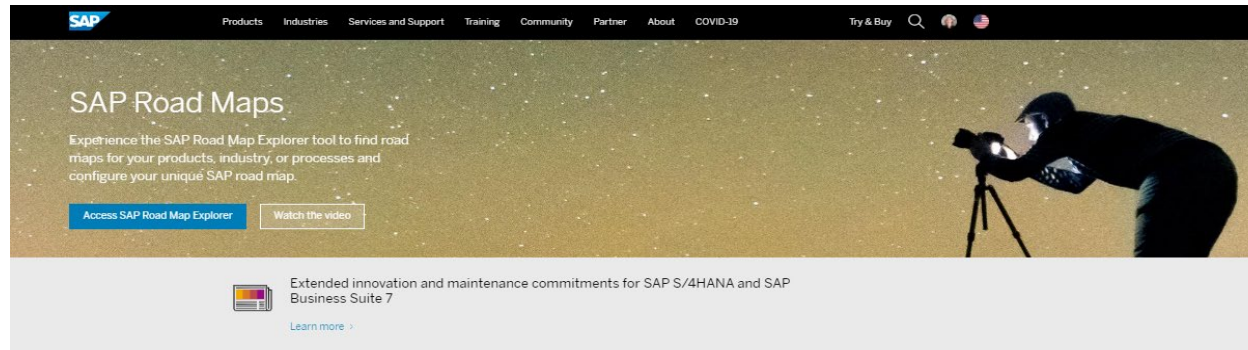
Agenda

1. SAP Roadmap Explorer
2. SAP Readiness Check 2.0
3. SAP S/4HANA Community

SAP Roadmap Explorer

Understand the SAP product road map

Find out which features and innovations are recently delivered and planned to be delivered with future releases and plan your transition accordingly.



What are you looking for?

SAP Road Map Explorer and SAP Transformation Navigator can simplify your path to future SAP products and the Intelligent Enterprise.



Get a detailed view into the SAP road map

Gain an up-to-date overview on planned and available innovations, as well as technical information, through an interactive road map experience.

[Use the SAP Road Map Explorer](#)

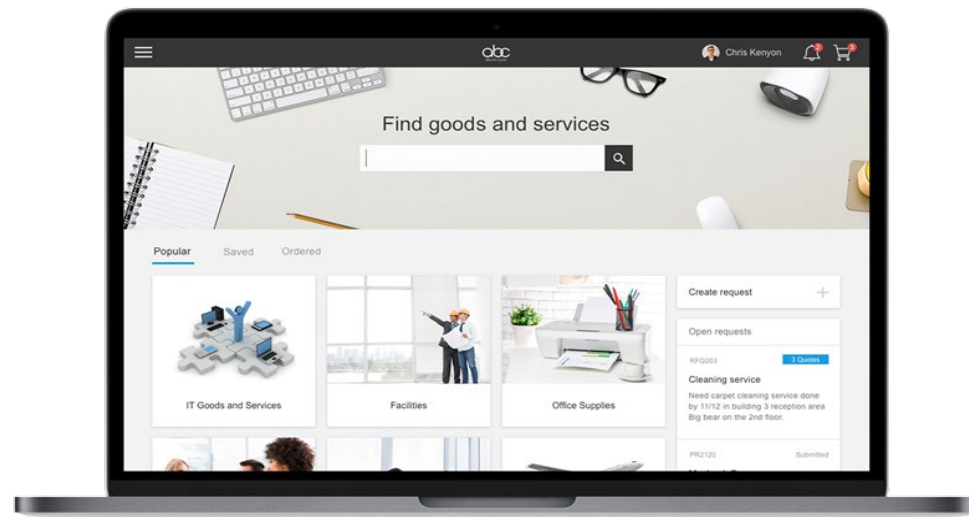


Map your business transformation

Find the right SAP solutions, technologies, and platforms that can advance your journey toward becoming an intelligent enterprise.

[Use the SAP Transformation Navigator](#)

SAP Roadmap Explorer Demo



sap.com/products/roadmaps

SAP Roadmap Explorer

SAP Road Map Explorer

roadmaps.sap.com/welcome#/
Apps SAP Managed Bookmarks External Presentatio... Portal Home - Porta... ERP Solutions by S... Linguee | Deutsch-E... Procurement Hub -... Kantinenbewirtung Firmenwagenfahrten Konzernbetriebsver...

SAP Road Map Explorer

Products Processes Industries My Road Maps

ERP and Finance

SAP S/4HANA
SAP S/4HANA Cloud
Financial Planning and Analysis
Accounting and Financial Close
Treasury Management
Accounts Receivable, Billing and Revenue Management
Cybersecurity, Governance, Risk and Compliance

CRM and Customer Experience

Customer Data
Marketing
Commerce
Sales
Service

Network and Spend Management

Supplier Management
Strategic Sourcing
Procurement
Services Procurement and Contingent Workforce
Travel and Expense

Digital Supply Chain

Supply Chain Planning
Supply Chain Logistics
Manufacturing
R&D / Engineering
Asset Management

HR & People Management

Employee Experience Management
Core HR and Payroll
Talent Management
HR Analytics and Workforce Planning

Business Technology Platform

Database and Data Management
Application Platform and Integration
Analytics
Intelligent Technologies

Search SAP Road Maps

Explorer

Products Processes Industries My Road Maps

Intelligent Enterprise Scenarios

Design to Operate
Lead to Cash
Source to Pay
Recruit to Retire

Most viewed Road Maps

Product

Industry

Product

Type here to search

Explorer

Products Processes Industries My Road Maps

Energy and Natural Resources

Building Products
Chemicals
Mill Products
Mining
Oil and Gas
Utilities

Financial Services

Banking
Insurance

Consumer Industries

Agribusiness
Consumer Products
Fashion
Life Sciences
Retail
Wholesale Distribution

Discrete Industries

Aerospace and Defense
Automotive
High Tech
Industrial Machinery and Components

Service Industries

Passenger Travel and Leisure
Engineering, Construction, and Operations
Media
Professional Services
Cargo Transportation
Sports
Telecommunications

Public Services

Defense and Security
Future Cities
Healthcare
Higher Education and Research
Public Sector

© 2020 SAP SE or an SAP affiliate company. All rights reserved. | PUBLIC

5

SAP Roadmap Explorer

The image displays the SAP Roadmap Explorer interface, which is used for managing and viewing SAP innovation roadmaps. The interface is divided into several sections:

- Top Navigation Bar:** Includes the SAP logo, "Road Map Explorer" title, and tabs for "Products", "Processes", "Industries", "My Road Maps", and "Disclaimer".
- Search and Filter Bar:** Features a search bar with "SAP S/4HANA" and "Manufacturing" selected, and a "140 Innovations" count. Below this are filters for "Products", "Processes", "Industries", "Focus Topics", and "Suite Qualities".
- Main Content Area:** Displays a grid of innovation cards for different time periods (Q4 2020, Q1 2021, Q2 2021, Q3 2021, Q4 2021). Each card lists specific innovations, such as "Extended Production Operations", "Just-In-Time Processing", "Portfolio Management", "Commercial Project Management", "Constraint-Based Product", "Maintenance Execution", "Project Financials Control", "Advanced Available to Promise", "Extended Warehouse Management", "Goods Movement", "Inventory Analytics and Control", "Advanced Available to Promise", "Constraint-Based Production Planning", "Capacity Planning", and "Evolution of time dependent master data in PPDS".
- Right Sidebar:** Shows "My Road Maps" and "Innovation Sets". A specific set named "demosc1" is highlighted, showing a time range of "Q1 2020 - Q3 2021" and a "MODIFIED ON 10/5/2020" date.
- Download Modal:** A modal window titled "Download Road Map" is open, showing filters for "SAP S/4HANA" and "Supply Chain", a time range of "Current - Current", and a count of "80 Innovations". A "Download" button is visible at the bottom.

SAP Classical Roadmaps on sap.com


Here you will find the classical roadmaps as a pdf document also. Please stay tuned, the SAP S/4HANA will be there shortly.

<https://www.sap.com/products/>

SAP Road Maps

Experience the SAP Road Map Explorer tool to find road maps for your products, industry, or processes and configure your unique SAP road map.

[Access SAP Road Map Explorer](#) [Watch the video](#)


 Extended innovation and maintenance commitments for SAP S/4HANA and SAP Business Suite 7

[Learn more >](#)

What are you looking for?

SAP Road Map Explorer and SAP Transformation Navigator can simplify your path to future SAP products and the Intelligent Enterprise.


Customer Influence and Adoption

 Get connected and help shape the future of SAP software

Discover a range of programs that give customers the opportunity to influence SAP software development and adopt new innovations early on.

[Explore the program](#)

Classical SAP Road Maps

 Explore road maps that can enhance business capabilities

Access the road maps that are in the process of being migrated to the SAP Road Map Explorer tool.

[Access the road maps](#)



SAP S/4HANA Readiness Check 2.0 - Introduction

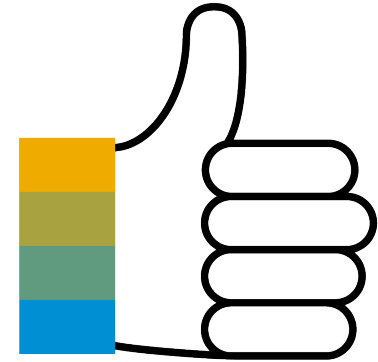
This tool extracts information from current ECC systems, digs deep and provides a user friendly dashboard report to help to focus on the key topics for the SAP S/4HANA journey.

New interactive dashboard and results document the most important aspects of an S/4HANA system conversion

- **Custom Code requirements:** Extended section on Custom Code analysis
- **Business Process Discovery:** Identification of inefficiencies in current process execution
- **SAP FIORI Apps** recommendation
- **Simplification Items:** Detailing the respective activities related to each Simplification Item, categorizing activities in mandatory, conditional or optional
- **SAP S/4HANA Sizing:** Simulation taking initial size, database growth and data volume management into account
- **Installed Add-Ons** and their compliance with SAP S/4HANA: Improved categorization of AddOns and Business Function check

Benefits

- Even better project preparation due to extended functional coverage
- Interactive features let you organize preparation work more efficiently
- Easy access to results for your preferred implementation partner, by enabling you to provide & control access inside SAP Readiness Check



[Setting up the SAP Readiness Check for SAP S/4HANA - SAP Note 2913617](#)

SAP Readiness Check for SAP S/4HANA

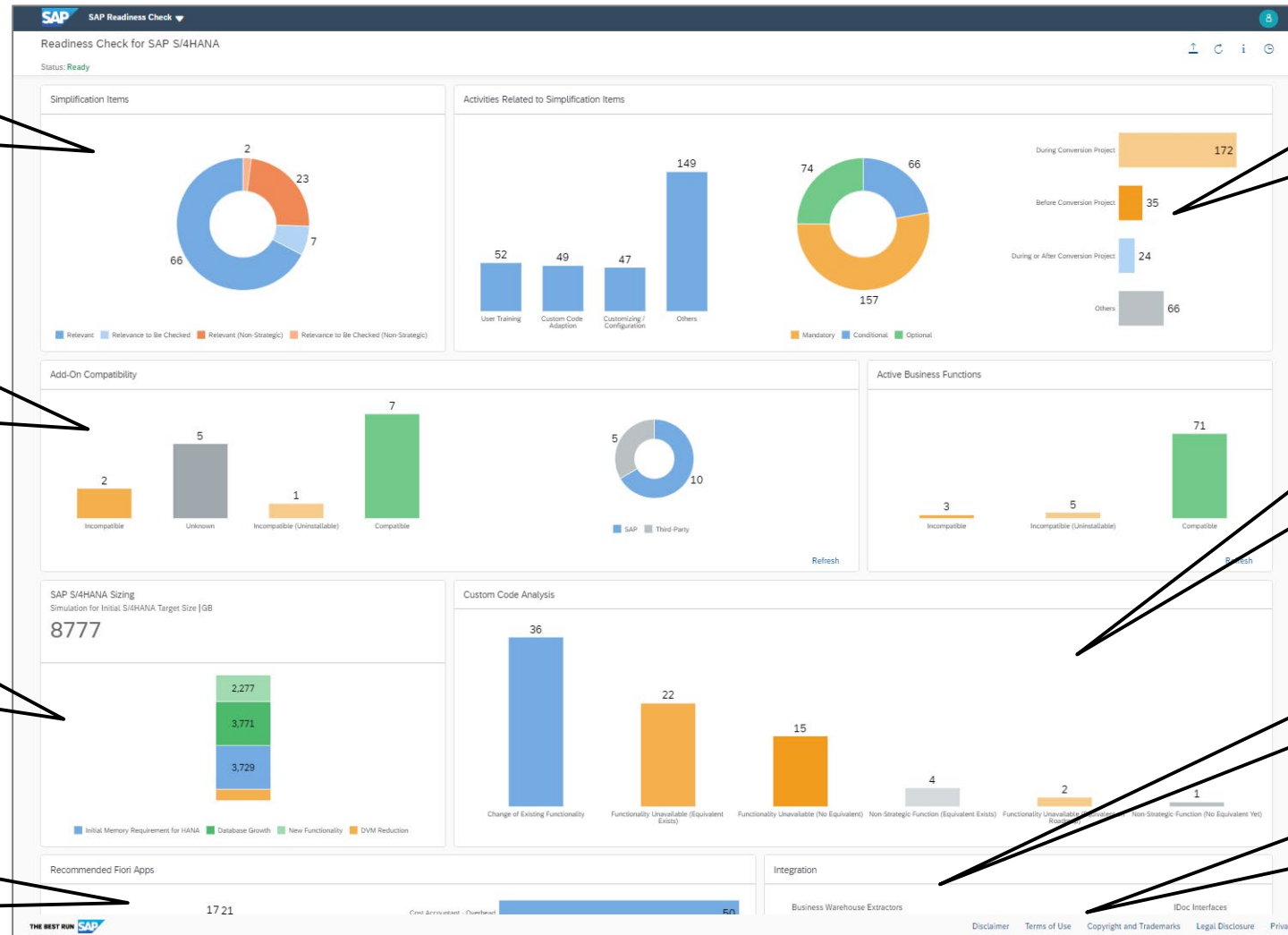
Overview of the Dashboard

Relevant
Simplification Items
based on your current
usage in SAP ECC

Your currently
installed **Add-Ons**
and **Business
Functions** checked
for compatibility with
SAP S/4HANA

Estimated memory
and disk **size**,
before and after
clean up, including
**archiving
potential**

Recommended
Fiori Apps based
on your current
usage



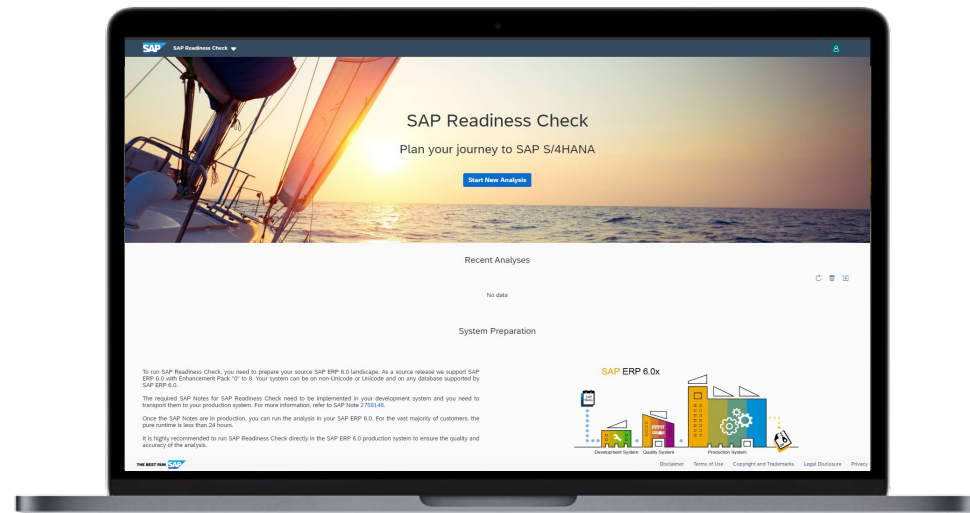
Action Items
resulting from
your relevant
Simplification
Items

Your **Custom Code**
analyzed with
respect to SAP
S/4HANA
compatibility

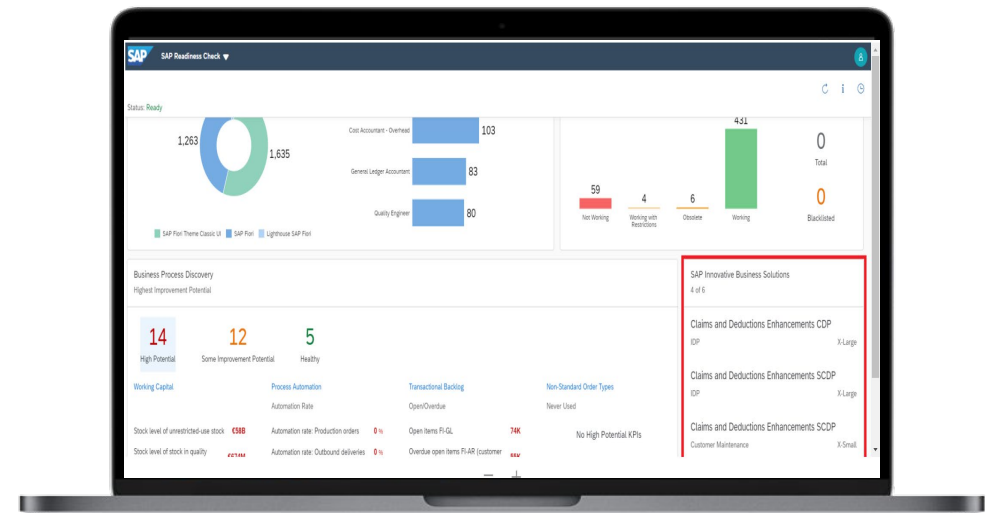
Shows whether your
BW extractors and
idocs are still
working under SAP
S/4HANA

**Business Process
Improvement**
potential

SAP S/4HANA Readiness Check 2.0




[SAP S/4HANA Readiness Check](#)



[SAP S/4HANA Readiness Check 2.0 Blog](#)

<https://blogs.sap.com/2019/07/19/sap-s4hana-how-ready-are-you/>

The new SAP S/4HANA Community




SAP S/4HANA

[▶ At a glance](#)

Welcome to the SAP S/4HANA community! Join us and discover the latest news on the modern ERP system which provides next-generation processes which connect and orchestrate your entire business.

Featured Content




The SAP S/4HANA Movement

With over 4,200 customers already live on SAP S/4HANA, and hundreds more going live every month, 2020 is the right time to begin your SAP S/4HANA journey. But how does one begin?

[Learn more about the movement](#)

[Join the community](#)




SAP S/4HANA 1909 - Release Highlights

This video provides you with everything you need to know about the SAP S/4HANA release strategy, and the latest key innovations for Line of Businesses and Industries.

[Watch the video](#)


[See the highlights in 90 seconds](#)



The Power of SAP S/4HANA - Video series

This series aims to provide partners, customers and the interested public insights into real SAP S/4HANA systems on a regular basis and in easy-to-consume pieces.

[Explore the series](#)



SAP S/4HANA Road Map

The SAP S/4HANA road map provides information on recent innovations, as well as planned innovations and a summary of future direction for the product.

[Browse the road map](#)

[How to influence the road map](#)

[Try the SAP Road Map Explorer](#)

Browse

SAP S/4HANA

- [SAP S/4HANA Asset Management](#)
- [SAP S/4HANA Cross Capabilities](#)
- [SAP S/4HANA Finance](#)
- [SAP S/4HANA Industries](#)
- [SAP S/4HANA Manufacturing](#)

[View all...](#)

Resources

Getting started

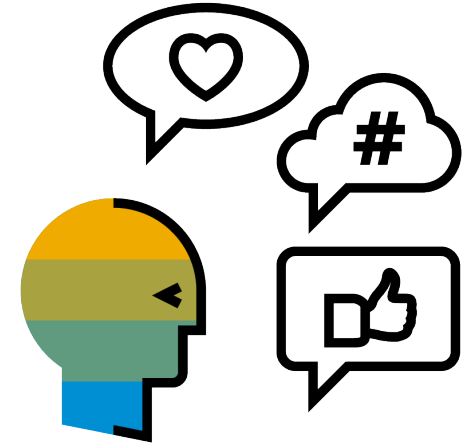
- [What is SAP S/4HANA?](#)
- [How to plan your transition?](#)

SAP S/4HANA Community - Introduction

The community serves as a One-Stop-Shop and communication platform where SAP employees, existing customers and the interested public can interact with each other via blogs, questions, comments, and assets.

By using the Community the visitors are able to:

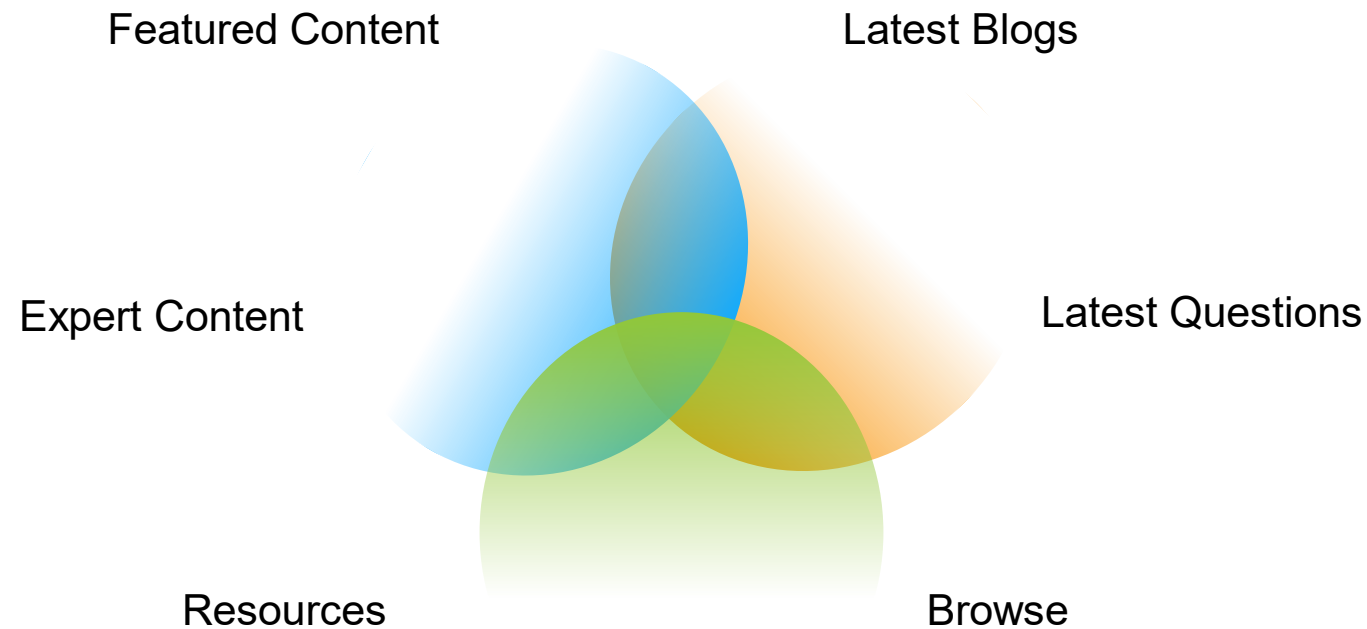
- establish a broad understanding of SAP S/4HANA
- gain insights into LoB & Industry specific innovations and functionalities
- browse through expert content which is focused on the adoption of SAP S/4HANA
- access information on recent and planned innovations
- plan their transition to SAP S/4HANA
- stay up to date with the latest Community news



Navigating through the Community

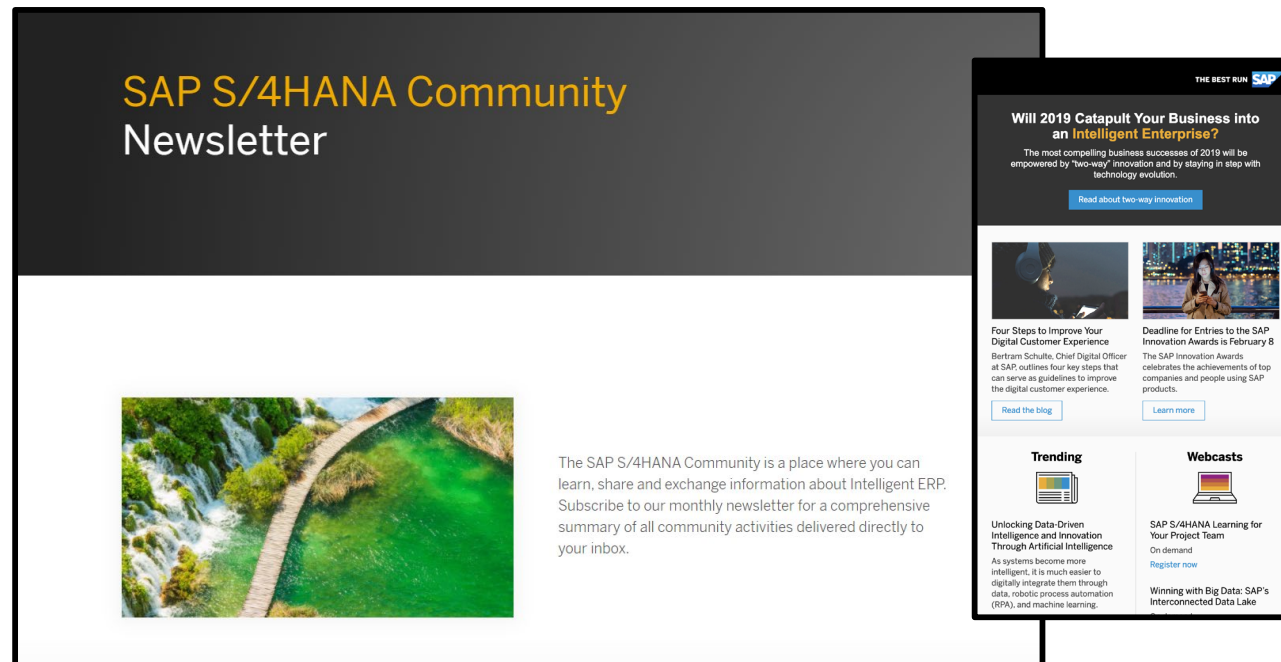
The landing page is the first stop in the Community and the place where the visitors can find anything they might need to start their own SAP S/4HANA journey!

The page is divided into six sections:



SAP S/4HANA Community Newsletter

The monthly newsletter helps its readers to stay up-to-date with everything that is going on in the SAP S/4HANA Community. It provides information about recently published assets, trending community topics and additional SAP S/4HANA news.



[Subscribe now!](#)

Thank you.

Contact information:

Sabine Rau

sabine.rau@sap.com

+49 15143819426